



N64W23760 Main Street
Sussex, Wisconsin 53089
Phone (262) 246-5200
FAX (262) 246-5222
Email: info@villagesussex.org
Website: www.villagesussex.org

**AGENDA
VILLAGE OF SUSSEX
PARK AND RECREATION BOARD
6:30 PM TUESDAY, FEBRUARY 15, 2022
SUSSEX CIVIC CENTER – COMMUNITY ROOM 1ST FLOOR
N64W23760 MAIN STREET**

Pursuant to the requirements of Section 19.84, Wis. Stats., notice is hereby given of a meeting of the Village of Sussex Park & Recreation Board, at which a quorum of the Village Board may attend virtually in order to gather information about a subject which they have decision making responsibility. The meeting will be held at the above noted date, time and location. Notice of Village Board Quorum, (Chairperson to announce the following if a quorum of the Village Board is virtually in attendance at the meeting: Please let the minutes reflect that a quorum of the Village Board is present and that the Village Board members may be making comments under any area where the public may comments or if the rules are suspended to allow them to do so.)

1. Roll call
2. Consideration and possible action on the minutes from the November 16, 2021 meeting.
3. Comments from Citizens Present
4. Discussion and Possible Action on Lisbon Central Cemetery Mowing Contract for 2022
5. Update on 2022 Budget Items & Discussion and Possible Action on Utility Tractor Replacement for Parks
6. Discussion and Possible Action on the Pickleball Facilities Open House and Voting
 - a. Presented Options
 - b. Categorized Comments
7. Discussion and Possible Action on Baseball Tournament Rain Date Policy
8. Discussion and Possible Action on Farmers Market Proposal
9. Park & Recreation Director's Report
 - a. Prides Crossing Park Improvements Update
 - b. 2021 Waitlist Data
 - c. Baseball Scheduling Priority in Peer Communities
 - d. Update on 2021 Funds (10 Year Contracts, Tree Preservation Funds, Rental Statistics)
10. Topics for Future Agenda Items
11. Adjournment

Robert Fourness
Chairperson

Jeremy Smith
Village Administrator

Please note that, upon reasonable notice, efforts will be made to accommodate the needs of disabled individuals through appropriate aids and services. For additional information or to request this service, contact the Village Clerk at 246-5200.

**VILLAGE OF SUSSEX
PARK AND RECREATION BOARD
6:30 PM TUESDAY, NOVEMBER 16, 2021
SUSSEX CIVIC CENTER – 2ND FLOOR COMMITTEE ROOM
N64W23760 MAIN STREET**

DISCLAIMER- THE FOLLOWING ARE DRAFT MINUTES FROM
THE SUSSEX PARK & RECREATION BOARD
AND ARE SUBJECT TO CHANGE UPON APPROVAL OF THE PARK & RECREATION BOARD

DRAFT MINUTES

Meeting was called to order by Chairman Bob Fourness at 6:31 p.m.

1. Roll Call

Members Present: Chairman Bob Fourness, Nadine Coenen, Mike Waltz, Kelly Tetting, Chris Kostka (appeared virtually), Ron Wells and Chuck Vojtas.

Members Excused: None

Staff Present: Park & Recreation Director, Halie Dobbeck and Assistant Village Administrator, Kelsey McElroy-Anderson.

2. Comments from Citizens Present

Name: Jeanette Schilter

Address: N61W23772 Sumac Lane

Comments: Strongly encouraged the board to create resident preference for recreation programs.

Name: Jerrold Schilter

Address: N61W23772 Sumac Lane

Comments: The board's strategic plan mentions citizen engagement and believes that if citizens were asked about priority registration that they would want priority registration. There should also be increased program capacity.

3. Consideration and possible action on the minutes from the October 19, 2021 meeting.

Motion by Coenen seconded by Waltz to approve the October 19, 2021 minutes.

Motion carried 7-0.

4. Discussion and possible action on changes to existing program enrollment policy.

Waltz requested specific data on Waitlists to be brought back to a future meeting.

Motion by Fourness seconded by Tetting to suspend the rules and allow for public comment.
Motion carried 7-0.

Jerrold Schilter, N61W23772 Sumac Lane, stated that he believes waitlist numbers are skewed because people don't sign up when they see that there is a waitlist.

Motion by Fourness seconded by Tetting to recommend that the Village Board change registration for programs to three (3) day resident priority registration with review after one (1) year.
Motion carried 7-0.

5. Discussion on Community Groups Field Reservations and Usage.

By consensus, the Park Board requested to see additional information on how other communities administer their field rentals.

6. Park & Recreation Director's Report

Ms. Dobbeck stated that Spooky Sussex saw 1,400 pre-registered and 490 walk up participants. We used over 145 volunteers and Village employees to pull off the event. We received 126 survey responses that were overwhelmingly positive. November 2nd, Kids around the World removed the Prides Crossing Playground. They will notify us as to where the playground gets sent to. The Templeton Middle School band will be performing at Tree Lighting on Friday December 3 at 6pm. Two Sussex Dance classes will also be performing at the event. We intend to return to our original style of event instead of repeating last year's drive thru. We're actively recruiting for a Part time Parks Maintenance Technician and have some good applicants for the position. The Winter/Spring Activity Guides were sent to the printer and are expected to be in mailboxes sometime during the week of November 29. Online registration starts December 6 and In-Person registration starts December 13.

7. Topics for Future Agenda Items

- No December Meeting; Next meeting is January 18, 2022
- Waitlist data for Park and Recreation programs
- Peer community analysis on ballfield reservation priority

8. Adjournment

Motion by Fourness seconded by Tetting to adjourn the meeting at 7:33 p.m.
Motion carried 7-0.

Respectfully Submitted,
Halie Dobbeck
Park & Recreation Director



N64W23760 Main Street
Sussex, Wisconsin 53089
Phone (262) 246-5200
FAX (262) 246-5222
Email: info@villagesussex.org
Website: www.villagesussex.org

MEMORANDUM

To: Park and Recreation Board, Village Board
From: Halie Dobbeck, Parks and Recreation Director
Date: February 7, 2022
Re: Lisbon Central Cemetery – Lawn Services Contract

We contracted with Al Moros last year to provide lawn services for the cemetery and were pleased with his service. He has indicated that he wishes to provide the same services for 2022 at a cost of \$160.00 per cut. Mr. Moros is asking for a \$5 per cut increase. Mr. Moros will be cutting the lawn once a week or on an as needed basis starting in April of this year and continuing until the grass goes dormant. Staff is confident that the lawn service costs will fall within our 2022 budget.

Staff recommends approval of the Lawn Services Contract.



This Lawn Service Contract (this “Contract”) is made effective as of February 22, 2022 between the Village of Sussex, N64W23760 Main Street, Sussex, WI 53089, and Al Moros, N68W26966 Silver Spring Drive, Sussex, WI 53089. In this Contract, the party who is contracting to receive the services shall be referred to as “Village of Sussex” and the party who will be providing the services shall be referred to as “Al Moros”.

NOW, THEREFORE, AND IN CONSIDERATION of the mutual promises and agreements contained herein, Village of Sussex contracts with Al Moros, and Al Moros agrees to provide Lawn Services, as an independent contractor to the Village of Sussex at the following location under the terms and conditions hereby agreed upon by the parties:

- 1. DESCRIPTION OF SERVICES.** Beginning April 1, 2022 Service Provider will provide the following services (collectively, the “Services”):
 - a. Al Moros shall mow and trim the lawn in a competent and professional manner at the Lisbon Central Cemetery, N67W25479 Silver Spring Drive, Sussex, WI 53089, which comprises approximately 1.5 acres with gravestones and other structures.
 - b. The parties shall consult periodically concerning the length and appearance of the lawn.
 - c. Al Moros shall complete the mowing and trimming and on an as needed basis, but not more than once per week, in a manner consistent with Al Moros’s mowing and trimming of this property over the past several years. Each complete mowing and trimming event shall be known as a “Service Event”.
 - d. Al Moros shall maintain insurance for his vehicles, equipment, and personnel at Al Moros’s sole cost, a certificate of which shall be provided to the Village.

- 2. PAYMENT OF SERVICES.** The Village of Sussex will pay compensation to Al Moros for the Services at the rate of \$160.00 per Service Event. Al Moros shall request payment from the Village of Sussex by invoice or other written request and Village of Sussex shall pay said request in a timely manner according to its customary payment practices.

- 3. TERM/TERMINATION.** This contract shall terminate by November 1, 2022. The Agreement may be terminated by either party if 30 day written notice is given to the other party seeking termination of the contract. There is no penalty for early termination of the contract.

Al Moros

Date

Halie Dobbeck, Park & Recreation Director

Date



N64W23760 Main Street
Sussex, Wisconsin 53089
Phone (262) 246-5200
FAX (262) 246-5222
Email: info@villagesussex.org
Website: www.villagesussex.org

MEMORANDUM

To: Parks & Recreation Board
From: Halie Dobbeck, Parks and Recreation Director
Re: 2022 Budget Items
Date: February 11, 2022

The Village Board authorized the following expenses and revenues pertaining to the Parks and Recreation Department:

Expenses

- Existing – Prides Crossing Park Updates – move from 2021 budget to 2022 budget
- Replacement - Utility Tractor (Depreciation Funds)
- Replacement – Fleet Work Truck (Depreciation Funds)
- Replacement – Gator (Depreciation Funds)
- Replacement – 11’ Mower (Depreciation Funds)
- Replacement – Zero Turn Mower (Depreciation Funds)
- Replacement – Picnic Tables (\$8,000- Cash Capital)
- New – Pavilion at Prides Park (\$16,500 - Park Impact Fees)
- New – Lisbon Stone Family Park (\$40,000 Park Impact Fees, \$60,000 Depreciation Funds)
- New – Swimming Pool Feasibility Study (\$12,500, 25% of the cost of the study)
- New – Vista Run Park Study (Cash Capital)
- New – Pickleball Solution (Not to exceed \$150,000 of American Rescue Plan Act (ARPA) Funds)
- New – Increased Depreciation of Park Playgrounds (\$60,000 – fully depreciated)

Revenues

Increase in Ball Field Rentals

2022 - \$20/practice field; \$40/game field

2023 – \$30/practice field; \$50/game field

Re-evaluate for 2024.



N64W23760 Main Street
Sussex, Wisconsin 53089
Phone (262) 246-5200
FAX (262) 246-5222
Email: info@villagesussex.org
Website: www.villagesussex.org

MEMORANDUM

To: Park Board
From: Thom Berres, Parks Foreman
Date: 1/28/22
Re: Tractor Replacement

The 2002 Case Tractor is due for replacement. The tractor is now 20 years old and is currently unusable (in need of \$3,500 in repairs to the front drive train). It is undersized (35 horsepower) for the functions we need it to accomplish. The tractor, at minimum, needs to be able to manipulate picnic tables, help with tree removals, and transport equipment and supplies (including 1-ton baseball supplies that arrive on pallets). We also need it to safely pull people movers for events, like Spooky Sussex. Our current tractor can only lift 500 pounds and is not safe to pull a trailer. Staff has determined that this tractor's replacement should come with a high horsepower (75 horsepower) to better serve our needs.

Farmers Implement has offered a \$6,000 trade in value for the 2002 tractor. All tractors proposed below have a full cab so it is a four-season piece of equipment, all of our attachments will work with the new tractor.

There were 3 quotes obtained for the tractor.

DEALER	MODEL	COST
Farmers Implement	Case 75A	\$52,000
Power Sports	Kubota M5	\$56,000
Proven Power	John Deere 5100M	\$79,000

Recommendation

Staff recommends the purchase of the Case 75A. The total investment in this equipment is \$46,000 considering the trade-in value of \$6,000. The Case 75A is the lowest bid and what staff recommends. This is well under the approved \$68,000 in the capital outlay of the 2022 budget.

Halie Dobbeck

From: Thom Berres
Sent: Friday, January 21, 2022 10:59 AM
To: Halie Dobbeck
Subject: FW: Farmall 75A
Attachments: image2022-01-21-100956.pdf

Sent via the Samsung Galaxy, an AT&T 4G LTE smartphone tberres@villagesussex.org 262-765-6875

----- Original message -----

From: Scott Schreffler <schrefs@farmersinc.com>
Date: 1/21/22 10:44 AM (GMT-06:00)
To: Thom Berres <tberres@villagesussex.org>
Subject: Farmall 75A

Good morning

Here is the information for the 75A tractor

We have one coming in hopefully first week of April

It has a cab with mfd front axle and a loader with skidsteer style attach.

List \$66,259.00

Cash \$52,000.00

Trade -\$6,000.00

Total trade price would be \$46,000.00

Let me know if you think this tractor would fit your needs.

I could put a hold on it for you. It is identical to the one you borrowed in fall but 10hp more.

Has a power shuttle transmission and a nice cab.

Please feel free to call or email me with any questions.

Thanks

scott

**FARMALL 75A
US PRICE LIST**

Standard Equipment

ENGINE:

Farmall 75A
74 Gross Engine hp
60 PTO hp @ 2300 rpm
3 Cyl Turbocharged Engine
179 cu in (2.9 L) Displacement

Tier B Emissions Compliant:
(CEGR + DOC)

Electronic Injection Bosch
High-pressure Common Rail System
Electric Engine Shutoff
Hand and Foot Throttle Controls
Grid Heater Starting Aid
Powercore Dry Air Cleaner
Under Hood Muffler
Vertical Exhaust
21.6 gal Fuel Tank

EXHAUST:

Under Hood Muffler with Vertical
Exhaust

TRANSMISSION:

LH side steering column mounted
Mechanical Shuttle
8 Forward and 8 Reverse Speeds
(4) Synchronized Gears
(2) Non-synchronized Ranges
11 Inch Single Dry Disk Clutch
19 mph (30 KPH)
Power Shuttle (Optional)
12 Forward and 12 Reverse Sp.
(4) Synchronized Gears
(3) Non- Synchronized Ranges
(2) Clutches; (5) Wet Disk Plates
25 MPH (40KPH)
Speed varies with tire selection
Hand Operated Park Brake

FRONT AXLE:

2WD:

Inverted "U" axle design
6,614 lbs. (3000 kg)

restricted (dynamic) axle capacity
5,291 lbs. (2400 kg)
unrestricted (static) axle capacity
Turning radius of 144 in.
(3650mm) without brakes

2WD: (Continued)

Track widths from 54 in. (1362 mm)
to 69 in. (1762 mm) with adjustable
rims and axle

MFD: (Optional)

Limited Slip
Electro-Hydraulic engagement standard
Adjustable Tread Width from 51.5 in.
to 79.4 in.

REAR AXLE:

Flange Type
Adjustable Tread Width 60.1 in.
to 76.0 in.

TIRES:

2WD:
7.50-16 F-2 Front
16.9X30 R-1 Rear

MFD:

11.2x24 R1 Front
16.9X30 R1 Rear

HYDRAULIC SYSTEM:

Open Center System
Dual Gear Pumps
Implement Pump: 12.5 gpm (47.7 L)
Steering Pump: 7.6 gpm (28.7 L)
Total Flow: 20.1 gpm (76.4 L)
(2) Open Center Remote Valves with
Detent & Kickout on #2

PTO:

Fully Independent
Flip-up PTO Shaft Guard
4WD power shuttle:
-540 RPM hydraulic wet clutch

FARMALL 75A
US PRICE LIST

Standard Equipment

-Electronic engagement
-Wet clutch
1-3/8 in. 6 splines

HITCH:

3-point Category II with fixed lower links
and telescoping stabilizers
4300 lbs. Lift Capacity at 24 inches
Swinging Drawbar
Mechanical Draft Control
Upper Link Draft Sensing

STEERING/BRAKES:

Hydrostatic Power Steering
Brakes- Hydraulic assist wet brakes

INSTRUMENTATION:

Analog Instrumentation with warning lights for turn signals, high beam, work lights, side lights, rear PTO, 4WD, differential lock, low fuel, alternator, oil pressure, brake fluid, grid heater & hand brake
Gauges for fuel level, engine temperature and tachometer
Digital Readout for PTO speed, ground speed, battery & hours

ELECTRICAL:

(1) 840 cca Heavy-Duty Battery
120 amp Alternator
7-pin Outlet for trailer/implement lighting and signals
25 amp socket
12V power socket (cigarette lighter)

LIGHTING:

Front: (2) Halogen Headlights and
(2) cab mounted worklights
Rear: (2) cab mounted worklights
Turn Signals/Flashers/Rear Lights

OPERATIVE PROTECTIVE STRUCTURE:

CAB MODELS
ROPS protected, flat deck platform with heat and air conditioning, tinted windshield, retractable sun screen,

CAB MODELS (Continued)

front wiper and washer, two doors with locks, two external mirrors, openable side windows, hinged rear window (fully opens), High Visibility roof panel (openable)
Steering Wheel - adjustable tilt
Seat - Cloth covered with mechanical suspension, operator's presence sensor, retractable seat belt, arm rests
Suspended pedals
Radio ready (speakers and antenna)
Instructor seat ready

NON-CAB MODELS

2-Post Foldable ROPS with ISO and mounted flat deck platform
Steering Wheel - adjustable tilt
Seat - Vinyl covered with mechanical suspension, operator's presence sensor, retractable seat belts, arm rests
Suspended pedals
Locking brake pedals
No Instructor seat

MISCELLANEOUS:

Pivoting Engine Hood
SMV Emblem, and Toolbox

WARRANTY:

Case IH Standard Warranty Applies

Tier 4 B/Final Emissions Compliant:

L610 Front Loader, OPTIONAL

**FARMALL 75A
US PRICE LIST**

Standard Equipment

STANDARD FEATURES:

Quick attach design(Skid Steer or Euro style)
4-Bar bucket linkage
Bucket level indicator
Parking stands
Grill guard
(Not compatible with 2WD tractors)

SPECIFICATIONS:

L610 NON SELF-LEVELING
Maximum Lift Height @ pivot pin: 132"
Dump Clearance @ 45 deg: 99"
Digging Depth: 5"
Lift Capacity @ 800mm: 1,828 LBS
Reach @ Max Lift Height @ 45 deg: 44"

Reach @ Ground Level: 84"
Bucket Rollback Angle: 42 degrees
Bucket Dump Angle: 58 degrees
(Not compatible with 2WD tractors)

L610 MECHANICAL SELF-LEVELING

Maximum Lift Height @ pivot pin: 130"
Dump Clearance @ 45 deg: 97"
Digging Depth: 6"
Lift Capacity @ 800mm: 3,153 LBS
Reach @ Max Lift Height @ 45 deg: 44"
Reach @ Ground Level: 84"
Bucket Rollback Angle: 42 degrees
Bucket Dump Angle: 61 degrees
(Not compatible with 2WD tractors)



FARMALL UTILITY A SERIES

55A / 65A / 75A | 55 - 75 ENGINE HP | 43 - 60 PTO HP*

The Farmall utility 55A, 65A and 75A models offer cab configurations and more transmission options to handle tough jobs around the farmyard.

STANDARD FEATURES:

- 3-cylinder, 2.9-L FPT engine (Tier 4 B/Final-compliant)
- 8x8 mechanical transmission
- Two rear remotes
- High visibility roof panel (cab configurations)
- Radio ready (cab configurations)

OPTIONAL FEATURES:

- Instructor seat (cab configurations)
- Bluetooth® radio (cab configurations)
- 12x12 clutchless power shuttle or 12x12 with creeper option
- Shifttable 540/540E PTO*
- Third rear remote

CONFIGURATIONS:

- 55A and 65A: Cab, 2WD/MFD
- 75A: Cab or non-cab, 2WD/MFD



*See specs for details.

STANDARD SMALL UTILITY

FARMALL UTILITY 55A/65A/75A

THESE FARMALL MODELS ARE PACKED WITH POWER AND VALUE TO TACKLE THE TASKS OF YOUR OPERATION — WITHOUT BREAKING THE BANK.



IT ALL BEGINS UNDER THE HOOD.

- The Case IH FPT engine is **turbocharged and electronically controlled with a tunnel block design** to ensure ruggedness and easy maintenance without sacrificing power, efficiency or performance.
- **No diesel particulate filter, diesel exhaust fluid or regeneration is required** to increase uptime and decrease operating costs — all while meeting Tier 4 B/Final engine emissions standards.
- An **electronic, high-pressure common rail fuel system** precisely meters fuel as power is demanded, delivering optimal performance and fuel efficiency.
- **Optional shifttable 540/540E PTO** provides a fuel-saving option for less demanding applications.

EASY-TO-USE SHUTTLE.

- The **push/pull design** makes directional changes intuitive.



DESIGNED FOR VERSATILITY.

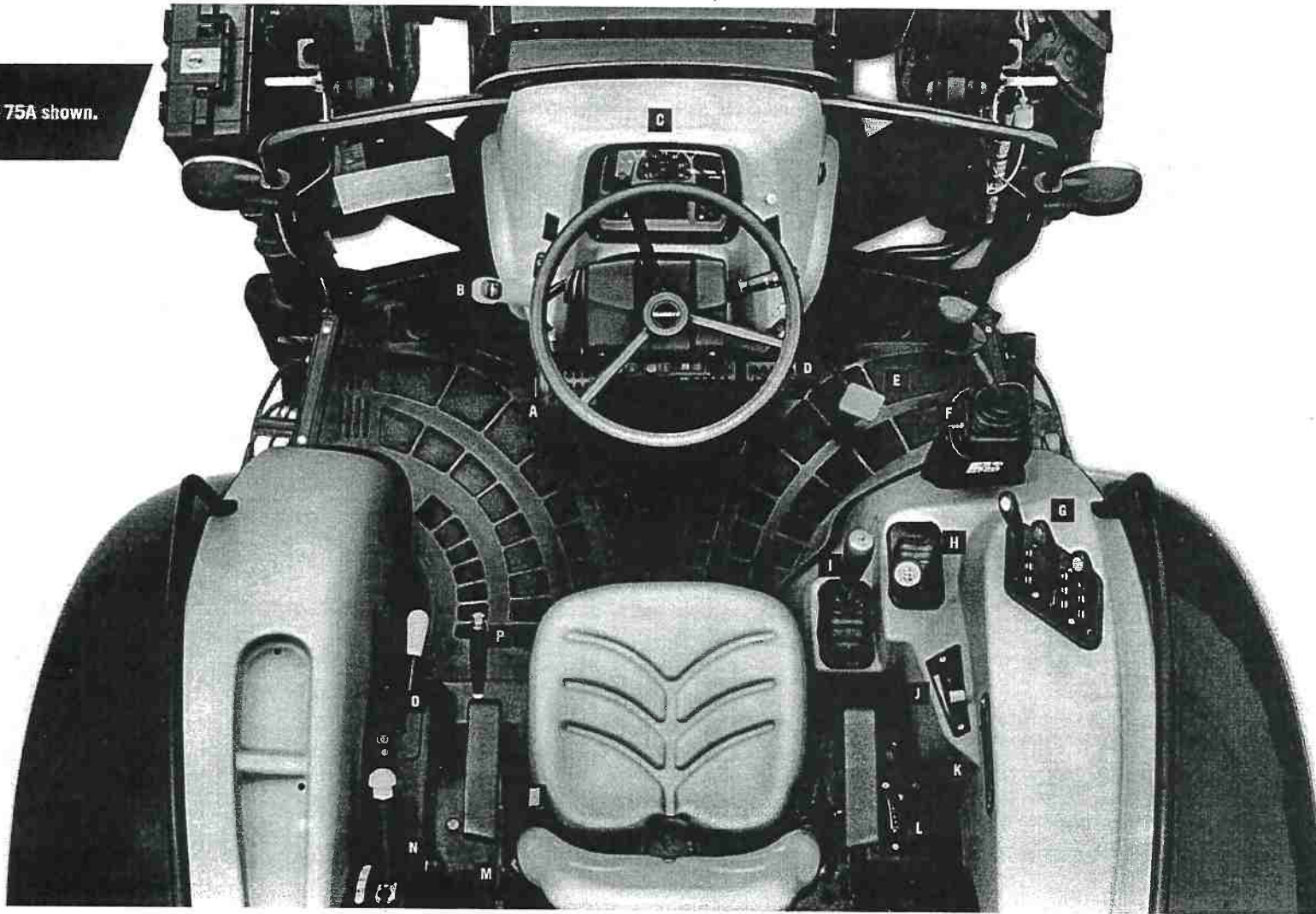
- Choose from either a simple **8x8 mechanical transmission** or a **12x12 clutchless power shuttle transmission** that's ideal for loader work.
- **Column-mounted mechanical synchro-shuttle** provides easier shuttling and decreased cycle time during loader applications and greater reverse speed choices.
- A **sloped hood** gives you increased visibility to your work area, while a **no-tools-required hood latch** offers easy opening, with gas struts for support in open position.
- **Movable dynamic fenders** allow for improved turning radius and maneuverability.

MORE COMES STANDARD.

- On cab models, a **standard high visibility roof panel** allows the operator to take on loader tasks — such as stacking bales — quickly and safely.
- **Heavy-duty powertrain components** put more weight where you need it to deliver a heavy, durable tractor that matches demanding jobs.
- **Tilt steering wheel adjustment** for improved operator comfort.
- Comfortably fit two adults in the cab with a **standard instructor seat** on cab configuration.
- **Standard radio ready** or choose the available Bluetooth radio option which allows you to listen to music or talk hands-free.
- **2 standard rear remotes.**
- A **600-hour oil change interval** provides maximum uptime.



Farmall utility 75A shown.



A Clutch Pedal

B Power Shuttle Control Lever

C Backlit Automotive-Style Gauges
with a Central LCD Display:

Fuel Level, Tachometer and Engine Coolant Temperature

D Brake Pedals

E Foot Throttle

F Loader Joystick

G Remote Hydraulic Control Levers

H Transmission Shift Lever: H-Pattern Speed Selector - Gears 1-4

I Range Selector 2 or 3 Ranges

J Hand Throttle

K Fast Raise/Lower Control

L 3-Point Hitch Control Levers: Position and Draft Control

M Beverage Holder

N 540 / 540E PTO Lever

O PTO Lever

P Parking Brake

Not Shown:

Steering Wheel Tilt Adjustment Pedal **Standard**

Optional Instructor Seat Cab Configurations

Radio Ready **Standard** Cab Configurations

High Visibility Roof Panel **Standard** Cab Configurations

Specifications

CU

Model	M4D-061HDC12	M4-071HDC12	M4D-071HDC12
	4WD	4WD	4WD
CAB	Deluxe Wide Cab	Standard Wide Cab	Deluxe Wide Cab
Engine	V3307-CR-TE4		
Type (Make : KUBOTA)	4 cylinder in-line, Common Rail System, Direct Injection		
No. of cylinders/Aspiration	4 / turbocharged		
Engine gross power (97/68/EC) HP (kW)	65.4 (48.8)		73.2 (54.6)
PTO power (at rated engine rpm) HP (kW)	52 (38.8)		60 (44.7)
Total displacement cu.in. (cc)	203 (3331)		
Rated engine RPM	2400		
Fuel tank capacity gal. (ℓ)	23.9 (90)		
Alternator Amp	130		
Transmission			
No. of speeds	F12 / R12 (option: F18 / R18 with Creep)		
Main gear shift	Fully synchronized (6 speed)		
Shuttle shift	Hydraulic-shuttle		
Main clutch type	Multiple wet disc		
Brake type	Hydraulic wet disc		
Differential lock (Front / Rear)	Limited Slip Differential / Mechanical		
4WD clutch type	Electro-hydraulic on-the-go	Mechanical on-the-go	Electro-Hydraulic on-the-go
PTO			
Type	Live-independent PTO, electro-hydraulic clutch with brake		
Speed rpm	540 / 540E	540 (540 / 540E: OPT)	540 / 540E
Hydraulics			
Pump capacity (3-Point Hitch) gpm (ℓ/min.)	16.7 (63.3)		
3-Point Hitch	Telescopic lower link ends, Telescopic Stabilizers		
Category	I / II		
Control system	Position, draft (top link sensing) & mixed control		
Lift capacity at 24 in. behind lift point (ASAE) lbs. (kg)	3307 (1500)		
Cylinder type	Two external cylinders		
No. of standard remote valves	2 (SCD / FD), Max. 3	1 (SCD), Max. 3	2 (SCD / FD), Max. 3
Other features			
4WD system	Bevel gear type		
Steering	Hydrostatic power steering		
Tilt steering	Standard		
Hood type / Pedal type	Full open, slanted, steel / Hanging		
Deck type (ISO-mounted w/rubber mat)	Full-flat		
Panel type	Electronic		
Standard tire size			
Front	320 / 85R20		
Rear	420 / 85R30		
Dimensions & weight			
Overall length in. (mm)	142 (3600)		
Overall height top of CAB in. (mm)	101 (2560)		
Overall width (minimum) in. (mm)	75.6 (1920)		
Wheelbase in. (mm)	84.1 (2135)		
Crop clearance (Front axle) in. (mm)	18.1 (460)		
Tread width Front in. (mm)	58.5 (1487)		
Rear in. (mm)	56.2, 68.7 (1430, 1744)		
Turning radius (w/o brake) ft. (m)	11.8 (3.6)		
Tractor weight lbs. (kg)	6008 (2725)	5952 (2700)	6008 (2725)

Kubota Tractor Corporation reserves the right to change the stated specifications without notice. This brochure is for descriptive purposes only and reasonable efforts were used to set forth the contained information; some items shown may be optional and some products shown may not be available at all dealerships. Kubota disclaims all representations and warranties, express or implied, or any liability from the use of this brochure. For complete warranty, safety and product information, consult your local Kubota dealer and the operator's manual. Power (HP/KW) and other specifications are based on various standards or recommended practices. For your safety, Kubota strongly recommends the use of a Rollover Protective Structure (ROPS) and seat belt in almost all applications. This brochure is intended for the United States and US territories only. For information regarding Kubota products or services outside these areas, see Kubota Corporation's global web site. Kubota does not provide parts, warranty or service for any Product which is re-sold or retailed in any country other than the country for which the Product(s) were designed or manufactured.



KUBOTA TRACTOR CORPORATION

1000 Kubota Drive, Grapevine, TX 76051 Tel 888-4 KUBOTA

Visit our web site at: kubotaUSA.com

©2019 Kubota Corporation



Kubota
Genuine Parts
 for maximum performance, durability and safety



Quotes are valid for 30 days from the creation date of the quote OR until the contract expires.

A Purchase Order or Letter of Intent is required for all orders.

To expedite the delivery of equipment, the below information must be included on your Purchase Order or Letter of Intent.

For any questions, please contact:

John Laubenstein

Mid-State Equipment Jackson
3660 Scenic Road
Jackson, WI 53037

Tel: 262-677-8400

Mobile Phone: 262-370-4250

Fax: 262-677-8230

Email: jlaubenstein@midstateequipment.com

Vendor: Deere & Company

2000 John Deere Run
Cary, NC 27513

Signature

Shipping address

Billing address

Billing email address

If information is not included, the Purchase Order or Letter of Intent will be returned.



JOHN DEERE

ALL PURCHASE ORDERS MUST BE MADE OUT TO (VENDOR):

Deere & Company
2000 John Deere Run
Cary, NC 27513
FED ID: 36-2382580; DUNS#: 60-7690989

ALL PURCHASE ORDERS MUST BE SENT TO DELIVERING DEALER:

Mid-State Equipment Jackson
3660 Scenic Road
Jackson, WI 53037
262-677-8400
jackson@midstateequipment.com

Quote Summary

Prepared For:

Village Of Sussex
WI

Delivering Dealer:

Mid-State Equipment Jackson

John Laubenstein
3660 Scenic Road
Jackson, WI 53037
Phone: 262-677-8400
Mobile: 262-370-4250
jlaubenstein@midstateequipment.com

Quote ID: 25959004

Created On: 24 January 2022

Last Modified On: 24 January 2022

Expiration Date: 23 February 2022

Equipment Summary

	Selling Price	Qty	Extended
JOHN DEERE 5075M PowrReverser™ Utility Tractor Contract: WI VA NASPO 505ENT-M20-GROUNDMAINT-02 (PG W1 CG 22) Price Effective Date: January 23, 2022	\$ 63,996.92 X	1 =	\$ 63,996.92
JOHN DEERE 5075M PowrReverser™ Utility Tractor Contract: WI VA NASPO 505ENT-M20-GROUNDMAINT-02 (PG W1 CG 22) Price Effective Date: January 23, 2022	\$ 61,864.22 X	1 =	\$ 61,864.22
JOHN DEERE 540M Loader Contract: WI VA NASPO 505ENT-M20-GROUNDMAINT-02 (PG W1 CG 22) Price Effective Date: January 21, 2022	\$ 7,081.91 X	1 =	\$ 7,081.91
Equipment Total			\$ 132,943.05

* Includes Fees and Non-contract items

Quote Summary

Equipment Total \$ 132,943.05

Trade In

SubTotal \$ 132,943.05

Est. Service \$ 0.00

Agreement Tax

Salesperson : X _____

Accepted By : X _____



JOHN DEERE

ALL PURCHASE ORDERS MUST BE MADE OUT TO (VENDOR):

Deere & Company
2000 John Deere Run
Cary, NC 27513
FED ID: 36-2382580; DUNS#: 60-7690989

ALL PURCHASE ORDERS MUST BE SENT TO DELIVERING DEALER:

Mid-State Equipment Jackson
3660 Scenic Road
Jackson, WI 53037
262-677-8400
jackson@midstateequipment.com

Total	\$ 132,943.05
Down Payment	(0.00)
Rental Applied	(0.00)
Balance Due	\$ 132,943.05

Salesperson : X _____

Accepted By : X _____



JOHN DEERE

Selling Equipment

Quote Id: 25959004 Customer Name:

ALL PURCHASE ORDERS MUST BE MADE OUT TO (VENDOR):

Deere & Company
2000 John Deere Run
Cary, NC 27513
FED ID: 36-2382580; DUNS#: 60-7690989

ALL PURCHASE ORDERS MUST BE SENT TO DELIVERING DEALER:

Mid-State Equipment Jackson
3660 Scenic Road
Jackson, WI 53037
262-677-8400
jackson@midstateequipment.com

JOHN DEERE 5075M PowrReverser™ Utility Tractor

Hours:

Stock Number:

Contract: WI VA NASPO 505ENT-M20-GROUNDMAINT-02
(PG W1 CG 22)

Selling Price *
\$ 63,996.92

Price Effective Date: January 23, 2022

* Price per item - includes Fees and Non-contract items

Code	Description	Qty	List Price	Discount%	Discount Amount	Contract Price	Extended Contract Price
251FPY	5075M PowrReverser™ Utility Tractor	1	\$ 62,240.00	22.00	\$ 13,692.80	\$ 48,547.20	\$ 48,547.20
Standard Options - Per Unit							
183A	JDLink™ Capable	1	\$ 0.00	22.00	\$ 0.00	\$ 0.00	\$ 0.00
185A	JDLink™ Connectivity	1	\$ 0.00	22.00	\$ 0.00	\$ 0.00	\$ 0.00
0202	United States	1	\$ 0.00	22.00	\$ 0.00	\$ 0.00	\$ 0.00
0409	English Operators Manual	1	\$ 0.00	22.00	\$ 0.00	\$ 0.00	\$ 0.00
1390	PowrReverser™ Hi-Lo 32F/16R 40 km/h	1	\$ 1,928.00	22.00	\$ 424.16	\$ 1,503.84	\$ 1,503.84
1725	Loader Prep Package	1	\$ 1,963.00	22.00	\$ 431.86	\$ 1,531.14	\$ 1,531.14
2060	Premium Panorama Roof Cab	1	\$ 16,000.00	22.00	\$ 3,520.00	\$ 12,480.00	\$ 12,480.00
2120	Air Suspension seat	1	\$ 965.00	22.00	\$ 212.30	\$ 752.70	\$ 752.70
2400	Less Instructional Seat	1	\$ 0.00	22.00	\$ 0.00	\$ 0.00	\$ 0.00
2511	Mirror Telescopic LH & RH	1	\$ 347.00	22.00	\$ 76.34	\$ 270.66	\$ 270.66
3025	Corner Post Deluxe Exhaust	1	\$ 686.00	22.00	\$ 150.92	\$ 535.08	\$ 535.08
3325	2 Mechanical Stackable Rear SCV	1	\$ 0.00	22.00	\$ 0.00	\$ 0.00	\$ 0.00
3420	2 Stackable Mid SCVs with Mechanical Joystick control	1	\$ 0.00	22.00	\$ 0.00	\$ 0.00	\$ 0.00
3820	Two Speed PTO - 540/540E	1	\$ 0.00	22.00	\$ 0.00	\$ 0.00	\$ 0.00
4030	Electronic Hitch Control with Remote Control on LH Fender	1	\$ 540.00	22.00	\$ 118.80	\$ 421.20	\$ 421.20
4110	Telescoping Draft Links with Ball End - Category 2	1	\$ 0.00	22.00	\$ 0.00	\$ 0.00	\$ 0.00
4160	LH Only Adjustment Lift Link	1	\$ 0.00	22.00	\$ 0.00	\$ 0.00	\$ 0.00



JOHN DEERE

Selling Equipment

Quote Id: 25959004 Customer Name:

ALL PURCHASE ORDERS MUST BE MADE OUT TO (VENDOR):

Deere & Company
2000 John Deere Run
Cary, NC 27513
FED ID: 36-2382580; DUNS#: 60-7690989

ALL PURCHASE ORDERS MUST BE SENT TO DELIVERING DEALER:

Mid-State Equipment Jackson
3660 Scenic Road
Jackson, WI 53037
262-677-8400
jackson@midstateequipment.com

4210	Mechanical Center Link with Ball Ends - Category 2	1	\$ 0.00	22.00	\$ 0.00	\$ 0.00	\$ 0.00
4420	LH & RH Stabilizer Bar	1	\$ 0.00	22.00	\$ 0.00	\$ 0.00	\$ 0.00
5192	19.5L-24 In. 10PR R4 Bias	1	\$ -2,297.00	22.00	\$ -505.34	\$ -1,791.66	\$ -1,791.66
5999	No Rear Tire Brand Preference	1	\$ 0.00	22.00	\$ 0.00	\$ 0.00	\$ 0.00
6040	MFWD Front Axle	1	\$ 0.00	22.00	\$ 0.00	\$ 0.00	\$ 0.00
6133	12.5/80-18 In. 12PR R4 Bias	1	\$ -1,777.00	22.00	\$ -390.94	\$ -1,386.06	\$ -1,386.06
6799	No Front Tire Brand Preference	1	\$ 0.00	22.00	\$ 0.00	\$ 0.00	\$ 0.00
8300	Cold Weather package - Coolant heater	1	\$ 101.00	22.00	\$ 22.22	\$ 78.78	\$ 78.78
Standard Options Total			\$ 18,456.00		\$ 4,060.32	\$ 14,395.68	\$ 14,395.68
Dealer Attachments/Non-Contract/Open Market							
AL213203	Lockable Filler Cap Fuel Tank	1	\$ 36.83	22.00	\$ 8.10	\$ 28.73	\$ 28.73
BSJ10485	Fuel Tank Shield Kit	1	\$ 170.50	22.00	\$ 37.51	\$ 132.99	\$ 132.99
BSJ10595	Quick-Hitch Category 2	1	\$ 752.40	22.00	\$ 165.53	\$ 586.87	\$ 586.87
BSJ10442	Backup Alarm Kit	1	\$ 185.90	22.00	\$ 40.90	\$ 145.00	\$ 145.00
BSJ10638	LED Beacon Light Kit - Cab	1	\$ 205.70	22.00	\$ 45.25	\$ 160.45	\$ 160.45
Dealer Attachments Total			\$ 1,351.33		\$ 297.29	\$ 1,054.04	\$ 1,054.04
Value Added Services Total			\$ 0.00			\$ 0.00	\$ 0.00
Total Selling Price			\$ 82,047.33		\$ 18,050.41	\$ 63,996.92	\$ 63,996.92

JOHN DEERE 5075M PowrReverser™ Utility Tractor

Equipment Notes:

Hours:

Stock Number:

Selling Price *

Contract: WI VA NASPO 505ENT-M20-GROUNDMAINT-02
(PG W1 CG 22)

\$ 61,864.22

Price Effective Date: January 23, 2022

* Price per item - includes Fees and Non-contract items



JOHN DEERE

Selling Equipment

Quote Id: 25959004

Customer Name:

ALL PURCHASE ORDERS MUST BE MADE OUT TO (VENDOR):

Deere & Company
2000 John Deere Run
Cary, NC 27513
FED ID: 36-2382580; DUNS#: 60-7690989

ALL PURCHASE ORDERS MUST BE SENT TO DELIVERING DEALER:

Mid-State Equipment Jackson
3660 Scenic Road
Jackson, WI 53037
262-677-8400
jackson@midstateequipment.com

Code	Description	Qty	List Price	Discount%	Discount Amount	Contract Price	Extended Contract Price
251FPY	5075M PowrReverser™ Utility Tractor	1	\$ 62,240.00	22.00	\$ 13,692.80	\$ 48,547.20	\$ 48,547.20
Standard Options - Per Unit							
183A	JLink™ Capable	1	\$ 0.00	22.00	\$ 0.00	\$ 0.00	\$ 0.00
185A	JLink™ Connectivity	1	\$ 0.00	22.00	\$ 0.00	\$ 0.00	\$ 0.00
0202	United States	1	\$ 0.00	22.00	\$ 0.00	\$ 0.00	\$ 0.00
0409	English Operators Manual	1	\$ 0.00	22.00	\$ 0.00	\$ 0.00	\$ 0.00
1390	PowrReverser™ Hi-Lo 32F/16R 40 km/h	1	\$ 1,928.00	22.00	\$ 424.16	\$ 1,503.84	\$ 1,503.84
1725	Loader Prep Package	1	\$ 1,963.00	22.00	\$ 431.86	\$ 1,531.14	\$ 1,531.14
2055	Standard Cab	1	\$ 13,657.00	22.00	\$ 3,004.54	\$ 10,652.46	\$ 10,652.46
2120	Air Suspension seat	1	\$ 965.00	22.00	\$ 212.30	\$ 752.70	\$ 752.70
2400	Less Instructional Seat	1	\$ 0.00	22.00	\$ 0.00	\$ 0.00	\$ 0.00
2511	Mirror Telescopic LH & RH	1	\$ 347.00	22.00	\$ 76.34	\$ 270.66	\$ 270.66
3025	Corner Post Deluxe Exhaust	1	\$ 686.00	22.00	\$ 150.92	\$ 535.08	\$ 535.08
3325	2 Mechanical Stackable Rear SCV	1	\$ 0.00	22.00	\$ 0.00	\$ 0.00	\$ 0.00
3420	2 Stackable Mid SCVs with Mechanical Joystick control	1	\$ 0.00	22.00	\$ 0.00	\$ 0.00	\$ 0.00
3820	Two Speed PTO - 540/540E	1	\$ 0.00	22.00	\$ 0.00	\$ 0.00	\$ 0.00
4030	Electronic Hitch Control with Remote Control on LH Fender	1	\$ 540.00	22.00	\$ 118.80	\$ 421.20	\$ 421.20
4110	Telescoping Draft Links with Ball End - Category 2	1	\$ 0.00	22.00	\$ 0.00	\$ 0.00	\$ 0.00
4160	LH Only Adjustment Lift Link	1	\$ 0.00	22.00	\$ 0.00	\$ 0.00	\$ 0.00
4210	Mechanical Center Link with Ball Ends - Category 2	1	\$ 0.00	22.00	\$ 0.00	\$ 0.00	\$ 0.00
4420	LH & RH Stabilizer Bar	1	\$ 0.00	22.00	\$ 0.00	\$ 0.00	\$ 0.00
5192	19.5L-24 In. 10PR R4 Bias	1	\$ -2,297.00	22.00	\$ -505.34	\$ -1,791.66	\$ -1,791.66
5999	No Rear Tire Brand Preference	1	\$ 0.00	22.00	\$ 0.00	\$ 0.00	\$ 0.00
6040	MFWD Front Axle	1	\$ 0.00	22.00	\$ 0.00	\$ 0.00	\$ 0.00
6133	12.5/80-18 In. 12PR R4 Bias	1	\$ -1,777.00	22.00	\$ -390.94	\$ -1,386.06	\$ -1,386.06
6799	No Front Tire Brand Preference	1	\$ 0.00	22.00	\$ 0.00	\$ 0.00	\$ 0.00
8280	Rear Window Wiper	1	\$ 323.00	22.00	\$ 71.06	\$ 251.94	\$ 251.94



JOHN DEERE

Selling Equipment

Quote Id: 25959004 Customer Name:

ALL PURCHASE ORDERS MUST BE MADE OUT TO (VENDOR):

Deere & Company
2000 John Deere Run
Cary, NC 27513
FED ID: 36-2382580; DUNS#: 60-7690989

ALL PURCHASE ORDERS MUST BE SENT TO DELIVERING DEALER:

Mid-State Equipment Jackson
3660 Scenic Road
Jackson, WI 53037
262-677-8400
jackson@midstateequipment.com

Standard Options Total	\$ 16,335.00	\$ 3,593.70	\$ 12,741.30	\$ 12,741.30
Dealer Attachments/Non-Contract/Open Market				
AL232065 Radio - AM/FM, Bosch (Standard)	1 \$ 532.40	22.00	\$ 117.13	\$ 415.27 \$ 415.27
BSJ10638 LED Beacon Light Kit - Cab	1 \$ 205.70	22.00	\$ 45.25	\$ 160.45 \$ 160.45
Dealer Attachments Total	\$ 738.10		\$ 162.38	\$ 575.72 \$ 575.72
Value Added Services Total	\$ 0.00			\$ 0.00 \$ 0.00
Total Selling Price	\$ 79,313.10		\$ 17,448.88	\$ 61,864.22 \$ 61,864.22

JOHN DEERE 540M Loader

Equipment Notes:

Hours:

Stock Number:

Selling Price *

Contract: WI VA NASPO 505ENT-M20-GROUNDMAINT-02
(PG W1 CG 22)

\$ 7,081.91

Price Effective Date: January 21, 2022

* Price per item - includes Fees and Non-contract items

Code	Description	Qty	List Price	Discount%	Discount Amount	Contract Price	Extended Contract Price
14C0P	540M Loader	1	\$ 9,700.00	24.00	\$ 2,328.00	\$ 7,372.00	\$ 7,372.00
Standard Options - Per Unit							
0202	United States	1	\$ 0.00	24.00	\$ 0.00	\$ 0.00	\$ 0.00
0409	English	1	\$ 0.00	24.00	\$ 0.00	\$ 0.00	\$ 0.00
0500	Less package	1	\$ 0.00	24.00	\$ 0.00	\$ 0.00	\$ 0.00
1995	Less mounting frame	1	\$ -1,449.00	24.00	\$ -347.76	\$ -1,101.24	\$ -1,101.24
2520	540M Standard farm loader, non-self-leveling (NSL) - Two-function	1	\$ 0.00	24.00	\$ 0.00	\$ 0.00	\$ 0.00
3551	Two-function hoses and parts	1	\$ 0.00	24.00	\$ 0.00	\$ 0.00	\$ 0.00
4572	Two-function mid-mount Quick Coupler Connection (individual couplers)	1	\$ 0.00	24.00	\$ 0.00	\$ 0.00	\$ 0.00
5995	Less hood guard	1	\$ -420.00	24.00	\$ -100.80	\$ -319.20	\$ -319.20
6020	Large ballast box	1	\$ 1,214.00	24.00	\$ 291.36	\$ 922.64	\$ 922.64



JOHN DEERE

Selling Equipment

Quote Id: 25959004 Customer Name:

ALL PURCHASE ORDERS MUST BE MADE OUT TO (VENDOR):

Deere & Company
2000 John Deere Run
Cary, NC 27513
FED ID: 36-2382580; DUNS#: 60-7690989

ALL PURCHASE ORDERS MUST BE SENT TO DELIVERING DEALER:

Mid-State Equipment Jackson
3660 Scenic Road
Jackson, WI 53037
262-677-8400
jackson@midstateequipment.com

7710	Skid steer-style carrier	1	\$ 0.00	24.00	\$ 0.00	\$ 0.00	\$ 0.00
8750	Less bucket	1	\$ -1,303.00	24.00	\$ -312.72	\$ -990.28	\$ -990.28
	Standard Options Total		\$ -1,958.00		\$ -469.92	\$ -1,488.08	\$ -1,488.08
Dealer Attachments/Non-Contract/Open Market							
BW15935	1850-mm (73-in.) global heavy-duty bucket	1	\$ 1,576.30	24.00	\$ 378.31	\$ 1,197.99	\$ 1,197.99
	Dealer Attachments Total		\$ 1,576.30		\$ 378.31	\$ 1,197.99	\$ 1,197.99
Total Selling Price			\$ 9,318.30		\$ 2,236.39	\$ 7,081.91	\$ 7,081.91

Quote ID :25959004

Product features, prices and specifications are based on published information at the time of publication and are subject to change without notice. All trademarked terms, including John Deere, the leaping deer symbol and the colors green and yellow used herein are the property of Deere & Company, unless otherwise noted. Products, product features, and other content on this site may only be accurate for products marketed and sold in North America.

Copyright © 1994- 2022 Deere & Company. All Rights Reserved.

File Created: 24-Jan-2022

2022 JOHN DEERE 5075M PowrReverser™ Utility Tractor

Hitch, drawbar, and PTO

Heavy-duty 3-point hitch lift capacity for implement versatility

Benefits

- With the choice of either mechanical or electrohydraulic hitch controls, hooking up implements is convenient with telescoping draft links, adjustable sway bars, and interchangeable hitch balls.
- Both mechanical and electrohydraulic hitch controls have a depth stop for consistency when lowering the hitch. Each time the position control lever is pushed forward, it stops where the depth stop has been positioned.
- Optional larger cylinders are available for increased lift capacity:
- PowrReverser™ transmission models: 65-mm (2.56-in.) cylinders in base with electrohydraulic hitch lift capacity of 2340 kg (5159 lb); option of one 65-mm (2.56-in.) and one 75-mm (2.95-in.) lift cylinder (averaging to 70 mm [2.75 in.]) which provides electrohydraulic hitch lift capacity of 2701 kg (5955 lb)
- PowrQuad™ PLUS and Powr8™ transmission models: 75-mm (2.95-in.) cylinders in base with hitch lift capacity of 3164 kg (6975 lb); option of 80-mm (3.15-in.) cylinders with hitch lift capacity of 3569 kg (7868 lb)



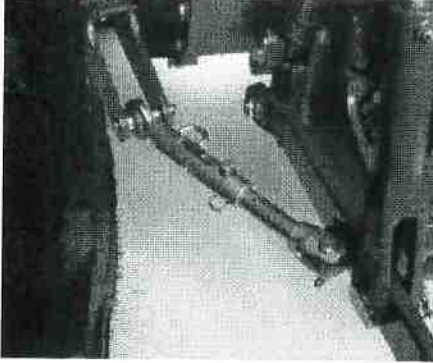
5M Tractor 3-point hitch

Overview

A Category 2, 3-point hitch on 5M Tractors provides the lift capacity and compatibility to perform in a variety of different applications. The 3-point hitch adapts to a wide variety of implements and has plenty of lift capacity to handle heavy implements such as planters, sprayers, and field cultivators.

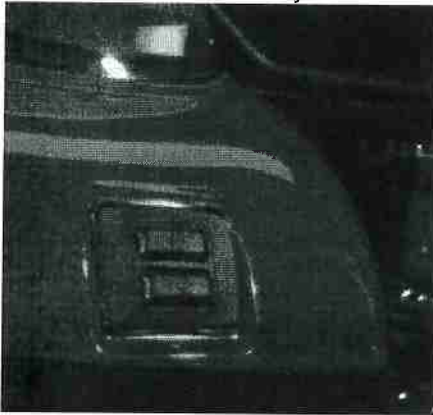
Quote ID :25959004

Additional details



5M Tractor sway bars

Adjustable sway bars and telescoping draft links can be easily adjusted to adapt to a wide variety of implements. The right lift link also adjusts without tools for added convenience when leveling implements.



5M rear fender hitch controls

Operators do not need to carry a tool to adjust the rear hitch. Operators can also raise and lower the 3-point hitch from outside of the tractor with the conveniently located rear fender hitch controls.



Rear quick hitch

An updated three-point quick hitch is offered on the 5M Tractors.

- This updated design is a break from the existing welded quick hitch as the frame is cast.
- The curved design eliminates the potential for contact with the rear fender and extensions.
- The quick hitch is available as a field kit option.

Hitch, drawbar, and PTO

Electrohydraulic PTO engagement

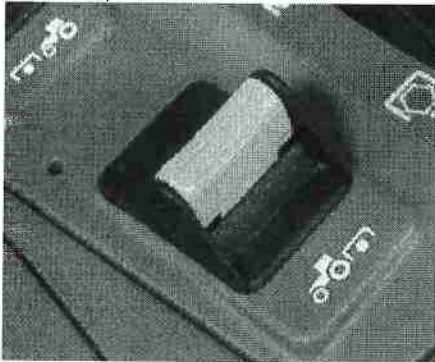
Unlike most competitive tractors of this size, operators receive all the power and torque for which they pay. The standard rear 540-rpm PTO speed is achieved while operating the engine at 2100 rpm, so the full advertised horsepower can be delivered to the implement in any PTO application.

In the cab, an easy-to-use toggle switch engages and disengages the PTO independently of the transmission traction clutch. 5M Tractors come with an electrohydraulic PTO engagement to reduce operator fatigue.

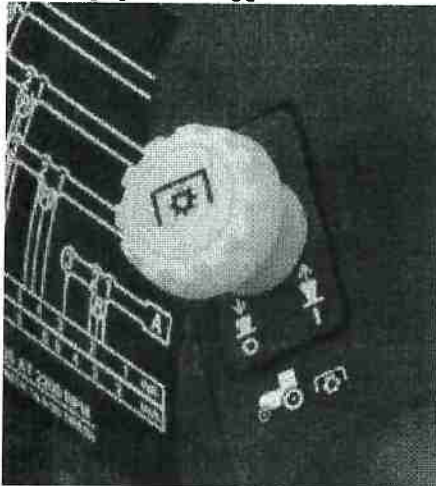
Quote ID :25959004

The push/pull knob on open station tractors is conveniently located beside the hand throttle on the right-hand side of the operator. When the PTO is engaged, a light on the instrument panel illuminates.

Enhancing operator safety, the tractor does not start with the PTO shaft engaged. An alarm sounds if the operator attempts to leave the seat with the PTO engaged. The PTO shaft is protected by a hinged shield.



Electrohydraulic PTO engagement toggle switch – cab



Electrohydraulic PTO push-pull knob – open operator station (OOS)

Hitch, drawbar, and PTO**540 Economy PTO****What is economy PTO?**

Economy PTO (540E PTO) allows the operator to achieve 540 PTO rpm to power an implement at a lower tractor engine rpm. Depending on the transmission, the 540E PTO engine requirement could be as low as 1600 rpm. Lower engine rpm translates to fuel savings and a reduction in vibration and noise level.

How does it work?

On John Deere Tractors, the shiftable 540/540E mode operates a little like shifting gears on the transmission. By engaging economy mode, the operator changes the gear reduction ratio keeping the PTO spinning at 540 rpm while reducing the engine rpm. When the operator shifts the PTO back into the standard 540 mode, a different gear ratio is used to operate the PTO at 540 rpm and the engine at standard PTO rated speed.

Quote ID :25959004

To operate in economy mode, the shiftable 540/540E lever must be in 540E. Then the throttle can be increased to the appropriate rpm. When in 540E, the tractor has a throttle limiter that keeps the operator from increasing engine rpm over the 540E setting. The limiter is used to prevent accidental over-speeding of PTO implements and protection against binding the PTO shaft.

When to use 540E PTO?

540E PTO is ideal for many lighter-duty applications including mowing, baling, or spraying that do not require full engine horsepower. The 540E setting cannot be used with full advertised PTO horsepower. If full PTO horsepower is required, operate the tractor in the standard 540 mode.

Nebraska Tractor Test has information regarding 540 economy PTO fuel consumption values for tractors where this option is available.

Details on the engine rpm required for standard 540 and 540 economy mode can be found in the operator's manual.

Stationary operation of the rear PTO with operator out of seat



Stationary PTO enable switch (cab)

The stationary PTO enable switch is in base for all 5000 Utility Tractors produced starting on 1 November 2020 (except for the 3-cylinder 5E Tractors with 9F/3R transmission). The PTO shuts down if the operator leaves the seat with the PTO on. Stationary operation of a tractor PTO-powered implement allows the operator to leave the driving position with the PTO engaged by pressing the stationary PTO enable switch. Additional information is available in the Operator's Manual. Refer to the chart below for models with the stationary PTO enable switch in base.

NOTE: The stationary PTO enable switch will be added in base for 3-cylinder 5E Tractors (9F/3R top shaft synchronized [TSS] transmission) effective spring of 2021.

Models	Description	Code
5M, 5ML, 5MH, 5R, 5RH, 3-cylinder 5E (PR), 4-cylinder 5E, 5EL	Stationary PTO enable switch	In base

Quote ID :25959004



PTO speed selector lever – cab



Open operator station
(OOS) 540E selector lever

Key Features

Heavy base tractor weight for stability

A heavy tractor means more down force to keep implements in the ground. More weight also leads to improved traction and performance in the field. Because the 5M is made with heavy and durable cast steel, it weighs enough to power through those tough jobs.

The compactness of the 5M Series regarding wheelbase, weight, and total height tractor makes this tractor suited for a variety of different applications and is the perfect choice for all types of farms.

A heavy tractor also means better stability when performing loader work. Transport full bucket loads faster and lift bales higher with a stronger and more stable base.

Quote ID :25959004



Tractor weight package

Model	5090M	5100M	5115M	5125M
MFWD cab	3950 kg (8700 lb)	4040 kg (8900 lb)	4040 kg (8900 lb)	4175 kg (9185 lb)

Key Features

Premium cab for the ultimate operating experience



5M Tractor premium cab
with 4240 Universal Display

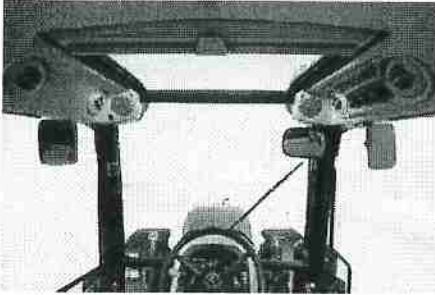
Overview

The premium cab is designed to provide the ultimate operator experience in comfort and convenience. With the adoption of some 5R Tractor cab structures and features, John Deere has added more technology options, better visibility, and an updated, user-friendly digital display.

Benefits

- Upward visibility has improved 80 percent with the panorama roof in the premium cab, allowing for easier bale stacking, pallet stacking, and dumping loads into walled trailers.
- The rear floor mat behind the seat provides additional storage space.
- The rearview mirror is positioned for excellent visibility to rear operations.
- To shield the operator from the sun, there is an easy to use front sunshade.

Quote ID :25959004



5M Tractor cab with panorama roof

Some of the key features include:

- Deluxe sound package with two 4X6 coaxial speakers and subwoofer
- Factory-installed radio
- Bluetooth® wireless ready
- Satellite ready
- USB port
- Auxiliary cord connection
- Additional heating and cooling vents
- Rear windshield wiper and washer

Bluetooth is a trademark of Bluetooth SIG, Inc.

Key Features

32F/16R PowrReverser™ transmission for ultimate speed control

For operators requiring more field speeds to achieve the most precise operating ranges, as well as for quickly moving from task to task with transport speeds of up to 40.23 km/h (25 mph), the 32F/16R PowrReverser™ Plus transmission is the ideal choice. This transmission provides 32F/16R speeds for the ultimate in speed selection. Convenient push-button controls actuate the electrohydraulic high/low selector. Also incorporated into the gear shift lever is the declutch button. No foot clutching is required to shift between gears within a range.

The gear lever selects one of four speeds, all synchronized shifts for on-the-go shifting with the use of the clutch. This same lever is where the high/low control buttons are located. The rear lever selects ranges A, B, C, or D. Ranges C and D are fully synchronized. That means, when upshifting, operators can move from ranges B to C to D without stopping the tractor. On the downshift, operators can move from D back down to C without stopping.

The high/low feature benefits operators who frequently transport their tractors from field to field or find themselves in bog-down situations during rear power take-off (PTO) work. Customers can push the rabbit button (high) without having to depress the clutch to get a 20 percent increase in speed. They can also push the turtle button (low) to get a 20 percent decrease in speed, similar to downshifting or engine braking without having to grab another gear. The 32F/16R transmission includes the infinitely variable shuttle control feature. The PowrReverser™ has a built-in engagement override valve for additional safety. This valve requires the clutch pedal to be depressed one time after each engine start before the transmission will begin to operate normally, giving the operator another opportunity to put all focus on the tractor.

NOTE: A neutral start switch requires the directional lever be in the neutral position to start the engine.



High/Low selector on gear lever

32F/16R transmission includes:

- Wet clutch
- Declutch button

Quote ID :25959004

- Platform-mounted shift levers (four gears, four ranges, with hi/lo selector)
- Left-hand reverser (F to R without clutching)
- Constant-mesh, helical gears
- Pressure-lubricated top shaft
- Positive park paw
- Neutral start switch

All 5M Tractors have E-PTO (a fuel-saving feature) that allows customers to operate rear implements at 540 PTO rpm but at lower engine rpm. The result is lower engine vibration, reduced noise, less wear and tear on the engine, reduced fuel consumption and increased operator comfort.

NOTE: See PTO detailed feature for more information on E-PTO.

Key Features
PowerTech™ diesel engine provides low-end torque

The engine powering the 5075M is EPA certified Tier Level 4. This is achieved through a combination of a diesel oxidation catalyst (DOC) and a diesel particulate filter (DPF). John Deere uses the most efficient solution for the tractor package to meet emissions requirements at each horsepower level. The system always defaults to passive regeneration mode, and will only go into an active regeneration cycle when necessary without impacting engine performance. This active cycle takes place on average about every 40 hours of normal tractor operation. The regeneration process cleans out the DPF element.

Model	Cylinders	Engine displacement	Engine hp	PTO hp	Rated rpm	Aspiration
5075M	3	2.9 L (0.77 gal.)	75	57.6	2400	Turbocharged

As per 97/68/EC ISO at rated speed.

Other key engine features and related benefits:

- Heavy-duty cylinder block – strength and rigidity
- Balanced crankshaft – reduces engine vibration
- Optimized cylinder heads – improved airflow, better fuel economy
- Low friction, high-ring pistons – cast-aluminum design
- Plasma-coated top rings – reduced drag on cylinder wall
- Wet-type cylinder liners – dissipate heat to prevent cylinder wear
- Full-pressure lubrication system – eliminates excessive heat
- Electric fuel shutoff – does not allow bypass starting

Cab operator station and controls
Premium cab for the ultimate operating experience

Quote ID :25959004



5M Tractor premium cab
with 4240 Universal Display

Overview

The premium cab is designed to provide the ultimate operator experience in comfort and convenience. With the adoption of some 5R Tractor cab structures and features, John Deere has added more technology options, better visibility, and an updated, user-friendly digital display.

Benefits

- Upward visibility has improved 80 percent with the panorama roof in the premium cab, allowing for easier bale stacking, pallet stacking, and dumping loads into walled trailers.
- The rear floor mat behind the seat provides additional storage space.
- The rearview mirror is positioned for excellent visibility to rear operations.
- To shield the operator from the sun, there is an easy to use front sunshade.



5M Tractor cab with panorama roof

Some of the key features include:

- Deluxe sound package with two 4X6 coaxial speakers and subwoofer
- Factory-installed radio
- Bluetooth® wireless ready
- Satellite ready
- USB port
- Auxiliary cord connection
- Additional heating and cooling vents
- Rear windshield wiper and washer

Bluetooth is a trademark of Bluetooth SIG, Inc.

Cab operator station and controls

Excellent operator comfort with cab seat options

Quote ID :25959004



Mechanical suspension seat



Air suspension seat



Premium air suspension seat (cab only)

Overview

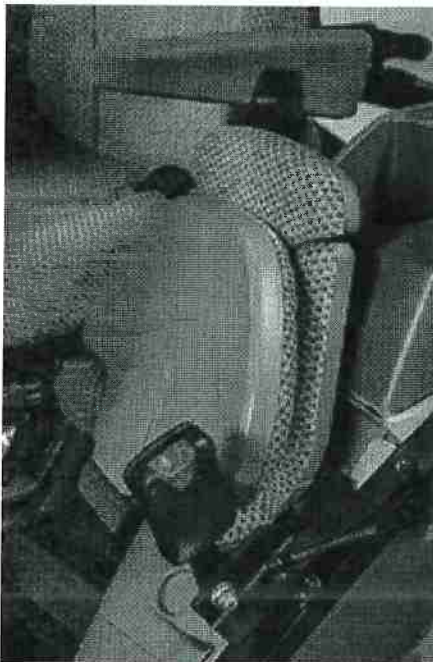
The cab trim level does not determine seat selection. Any seat can be selected with either cab. The three seat options are mechanical suspension, air suspension, and premium air suspension.

Benefits

- Only air suspension seats can swivel.
- The premium air suspension seat comes with high-back adjustment, fore and aft capacity, automatic height adjustment, lumbar support, and is heated.
- Ergonomically designed seat cushioning and support provide unsurpassed operator comfort.

Additional details

Instructional seat



Instructional seat

An instructional seat is also available either factory or field installed. Featuring a cloth seat cushion with a cloth extendable backrest, the instructional seat offers more comfort than ever before. A spring-loaded design makes sure the seat stays folded up when not in use and allows for easy operation when in use. It is also a low-profile, compact design that provides optimal space for entry and exit

Quote ID :25959004

Cab operator station and controls

Standard cab and controls

All cab trim levels come standard with a storage drawer underneath the seat and a coat hook for added comfort and convenience.

5M Tractors also include the following features:

- Retractable seat belts
- Rear certified rollover protective structure (ROPS) for isolated open operator station (IOOS) tractors
- Key-switch interlock that prevents bypass starting
- Audible and visual PTO warning alerts when the operator leaves the seat with the PTO engaged
- Positive park position which prevents the tractor from moving when the engine is off
- Four amber turn-signal/flashing warning lights for road transport
- Slow-moving-vehicle (SMV) sign that alerts other road users during transport
- Safety decals to keep safety in the minds of new and experienced operators
- Left- and right-hand steps that provide easy and convenient access from both sides of the tractor
- The 5M fuel system is fully grounded to meet safety and fuel fill regulation requirements.
- For convenience of operation, the fuel and diesel exhaust fluid fill are both on the same side with clearly marked and color-coded caps. The diesel exhaust fluid (DEF) tank has a capacity of 9.5 L (2.5 gal.), which is more than enough to sustain proper tractor operation and fuel treatment for a fuel tank of diesel. A field-installed lockable fuel cap is offered for protection and peace of mind.



Storage drawer



Coat hook

For year-round comfort and operating convenience, a standard cab is an option on all 5M Tractors. This system of assembly and mounting is similar to the successful mounting methods of the larger-horsepower tractors in the John Deere Ag tractor family.

Quote ID :25959004



Cab of 5M Tractor

- A storage drawer that can be used for extra tools is included.
- The brown floor mat makes dirt and grime less visible and gives the cab a cleaner look.
- All cabs are Bluetooth® microphone capable.
- To enhance year-round comfort, the passive cooling feature draws moisture away from the operator. The strategically positioned roof-mounted heating and cooling vents allow the operator to cool the tractor cab quicker during the hot summer months and heat the tractor quicker in the cold winter months.
- The instructor seat can be factory or field installed.
- A tilt-and-telescoping steering column provides a custom fit for each operator.
- The standard cab option has the provision in the cab harness to install JDLink™ Select telematics system.
- The cabs are assembled to the tractor chassis as a complete unit and mounted on composite isolators.
- A conveniently located beverage holder provides space for a beverage.
- The cab's side windows open outward for excellent ventilation, and right- and left-side doors open wide for easy entry and exit.
- For excellent rear visibility, the fuel tank is located below the left-hand side of the platform.
- The clean, uncluttered interior design with flat platform maximizes operator space.
- A convenient three-pin power outlet for monitor, controllers, and other operating necessities along with four sets of mounting bosses and a removable rear access plug for monitor or controller harnesses make using a monitor easy.
- A rear seven-pin electrical outlet socket for implement electrical requirements and a 90-amp alternator handles increased electrical requirements.
- The wiring for the optional third function (grapple function) is integrated through the joystick.
- To handle increased powertrain and hydraulic requirements in severe conditions, a hydraulic oil cooler is standard.

Operators benefit from excellent overall visibility in all applications with a swing-out, two-position rear window (with a grab handle) that opens at a full 70 degrees or just barely opens to check on power take-off (PTO) implements. This also makes for easier implement hookup and visibility. The rear window can remain slightly open so that the operator can also listen to rear PTO driven implements.



Rear window in both positions

Transmission controls



Range and gear levers for PowrReverser™ transmission

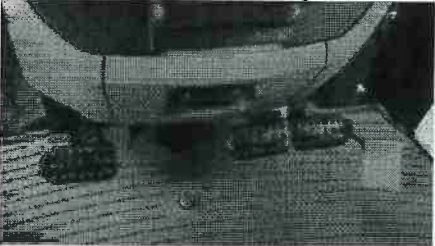
Gear and range shift levers are located to the right of the operator on all models. The redesigned gear-shift lever is easier to reach, and the less-used range lever is shorter. Unique knobs make it easier to distinguish between the two.

Quote ID :25959004



High/low push buttons on gear shift lever

Unique to the 32F/16R PowrReverser transmission, high-low push button controls located on the gear-shift lever allow operators to speed up or slow down quickly and without clutching for a 20 percent increase or decrease in speed.



Foot pedals

A foot throttle with a platform pedal is located on the right side of the operator for convenient throttle adjustment by the right foot. The pedal is positioned for easy use yet does not clutter the floor. The hand throttle is easily accessible on the right-hand console

When the tractor is used in applications requiring the clutch and brake pedals to be used frequently, the operator will see the benefit of the suspended pedals.



Left-hand reverser

On tractors equipped with the 16F/16R or 32F/16R PowrReverser transmissions, the electrohydraulic forward/reverse direction lever is located on the left-hand side of the instrument console, connected to the steering column. Operated with the left-hand finger, the right hand is free to simultaneously run the loader, hitch, or hand throttle.

3-point hitch controls

Mechanical or electrohydraulic hitch controls are available with the standard cab.

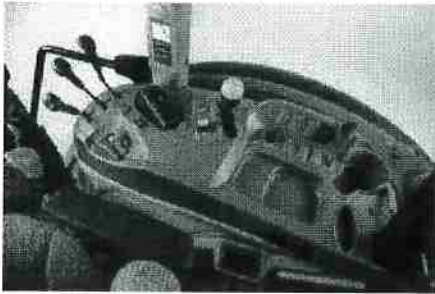


Electrohydraulic hitch control

The electrohydraulic 3-point hitch is ideal for operators requiring consistency and repeatability. With easy-to-use fingertip controls, the operator can precisely set the height and depth limits, raise and lower the hitch, set the rate of drop, and adjust draft sensing.

The electrohydraulic hitch offers all the solutions of the mechanical hitch, but electrohydraulic adjustments and implements can be even more precisely raised and lowered in 5-mm (1/4-in.) increments.

Quote ID :25959004



Right-hand hitch controls

Electrohydraulic hitch controls, located on the right-side console, are easy to reach and operate.



Raise/lower switch

The raise/lower switch is located on the left side of the controller. This rocker switch quickly raises and lowers the implement to the set height and depth.

A depth-stop wheel allows the operator to preset the depth. This increases consistency pass by pass and decreases the need to make repeated trips over the same ground.

The hitch lever control allows convenient, precise control of the hitch, especially useful when hooking up implements.

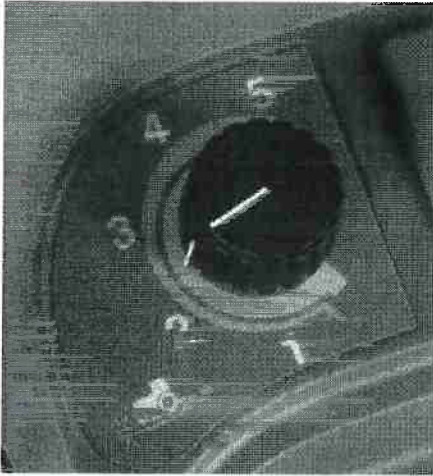


Hitch lift height and rate-of-drop controls

Located under the black cover is the height-limit control knob, which allows the operator to set the raise height. This function is especially useful when using a PTO implement, so as not to bind the PTO shaft when the implement is raised.

The rate-of-drop control knob is also conveniently located under the black cover on the right-side console and sets how fast the rockshaft lowers to the ground.

Quote ID :25959004



Draft control dial

The draft-sensing knob is to the right of the hitch controls on the right-hand console. This adjustment measures the load sensitivity of the 3-point hitch and allows the hitch to quickly raise or lower to control the load on the engine.

A separate draft-sensing knob on the electrohydraulic hitch eliminates the common mistake of operators using the draft-sensing lever rather than the rockshaft lever to raise and lower the hitch. It also allows draft sensing to be set and left alone during operation.



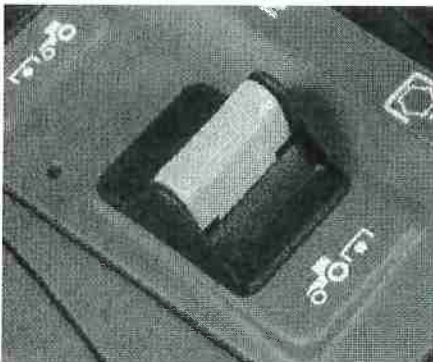
Fender-mounted hitch controls

The remote raise and lower switch comes standard on the left-hand fender. This allows operators to adjust the 3-point hitch while standing at the rear of the tractor, a time-saving feature every operator will appreciate when hooking up implements.

A right-hand fender remote raise and lower switch can also be added as a field-installed kit on standard tractors.

PTO controls

In the cab, an easy-to-use toggle switch engages and disengages the PTO independently of the transmission traction clutch. 5M Tractors come with an electrohydraulic PTO engagement to reduce operator fatigue.



Electrohydraulic PTO toggle switch

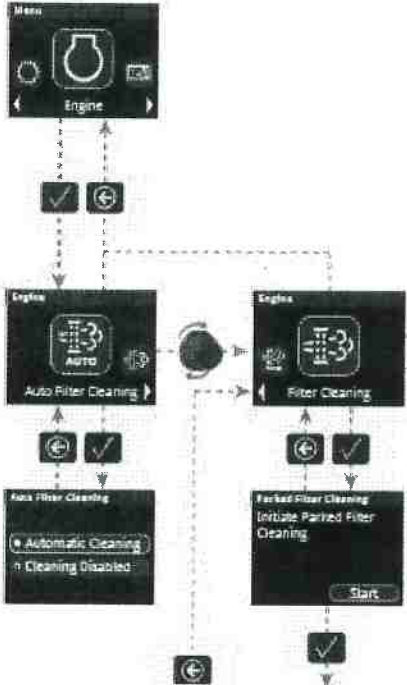
Enhancing operator safety, the tractor does not start with the PTO shaft engaged. An alarm sounds if the operator attempts to leave the seat with the PTO engaged, and the PTO shaft is protected by a hinged shield.

Hydraulic controls

The color-coded bands on the levers control dual and triple rear selective control valves (SCVs). The color of these bands corresponds to the color of the dust cap and the SCV valve they control.

Quote ID :25959004

Emissions system controls - regeneration filter switch



Regen icon flow chart

In order to inhibit passive system regeneration, the operator must hold down the spring-loaded inhibit switch in the up position for 5 seconds. This logic ensures the system requires very purposeful operation to inhibit. It cycles on the key switch and defaults to being on with every tractor start up, increasing operator uptime.

To navigate to the regen section, select the engine icon in the dash display and select the auto filter cleaning icon (see the navigation path in the image above).

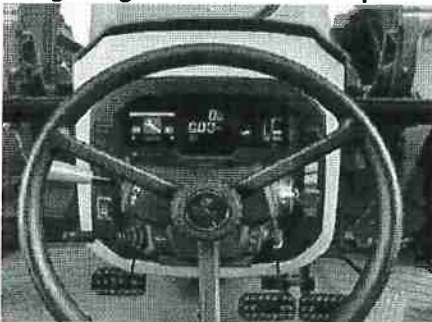
Mechanical front-wheel drive (MFWD) controls



MFWD toggle switch on left side of dash

All four-wheel drive (4WD) axles are equipped with engage-on-the-go MFWD. This toggle switch is located on the center console.

Lighting controls – multi-position dial



Light selector dial on lower right side of dash

The 5M Tractors with PowrQuad™ PLUS transmission have a three-position dial with off/road/work. The warning lights are in the switch module on the right-hand side of the center console.

The 5M with PowrReverser transmission, 5ML, and 5MH Tractors have a four-position lighting package with the lighting control switch on the right-hand side of the steering column. The switch positions are off, warning, road lights (warning lights, taillights, and high beam headlights) and work lights (work lights and high beam headlights). A turn-signal lever is located on the left side of the steering column for quick and easy use.

Bluetooth is a trademark of Bluetooth SIG, Inc.

Steering and brakes

Hydrostatic power steering

Confidential

Quote ID :25959004

Hydrostatic power steering ensures smooth, steady steering. This allows the operator to maneuver through tough terrain with confidence. Power steering provides optimum performance and efficiency in all conditions with minimal effort. This also provides confidence during loader operation; operators can carry a full load and still have the capability to maneuver easily.

Steering and brakes

Wet-disk brakes

The hydraulically actuated wet-disk brakes are self-adjusting. The brake pedals can be locked together for braking action on both rear wheels when in transport, or they can be unlocked to make tighter turns in the field. The brakes are oil cooled for maximum performance throughout the life of the tractor.

Hydraulics

Capacity for performance on demand

All 5M Series Tractors feature a gear-driven, open-center (constant-flow) hydraulic system with a maximum pressure of 19,500 kPa (2830 psi).

The tractor incorporates a tandem hydraulic pump design. The hydraulic and steering-transmission lubrication systems are functionally separate. Both systems utilize a common reservoir, resulting in ease of serviceability. All tractors with PowrReverser™ transmission come standard with a hydraulic oil cooler to handle increased powertrain and hydraulic requirements.

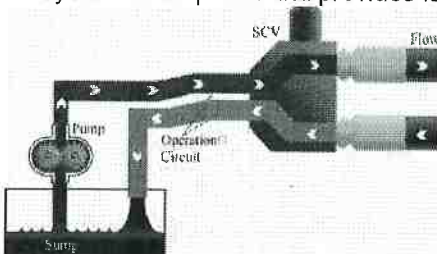
The open-center system has built in logic to give priority to the 3-point hitch, then to the mid selective control valves (SCVs), and then to the rear SCVs so an operator can raise an implement at the end of a pass to turn without having to turn the remote hydraulics off. The front half of the pump supplies hydraulic flow to the SCVs and 3-point hitch functions. When the 3-point hitch is in relief, flow is maintained at the SCV. This is most evident when using an implement like a planter.

The steering system is controlled by its own pump, so the operator can have full confidence in tractor maneuverability while operating any front or rear implements. The rear half of the pump delivers an additional 23.8-L/min (6.3-gpm) hydraulic flow to the steering circuit so steering is effortless, even with a full loader bucket on the front end or a heavy implement.

This priority flow system provides for fast cycle times, which results in time saved when operators are moving material. The system also supplies plenty of flow for running hydraulic motors.

Pressure for the entire system is established by the function requiring the highest pressure. As the demand lessens, so does the pump pressure and engine power requirement.

All functions return to the sump, giving improved system performance and cooling. By returning functions to the sump, the system is simplified and provides faster service and increased uptime.



Open-center hydraulic system

Quote ID :25959004

	5090M, 5100M, 5115M, 5125M, 5100MH, 5100ML, 5115ML
Steering pump	23.8 L/min (6.3 gpm)
Implement pump	69.7 L/min (18.4 gpm)
Total flow	93.5 L/min (24.7 gpm)
Maximum steering pressure	140 bar (2030 psi)
Maximum implement pressure	195 bar (2828 psi)

Electrical and lighting

Backup alarm kits



BSJ10306 alarm kit shown

Overview

The backup alarm kits signal with an audible alarm when the tractor is moving in reverse to alert others of the backwards movement.

Quote ID :25959004

2022 JOHN DEERE 540M Loader

Boom, mounting frame, and cylinders

Bucket-level indicator



Bucket-level indicator

A bucket-level indicator is included in base equipment:

- Located on the right-hand bucket cylinder
- Aids the operator, along with the flat top of the bucket, in determining the bucket-level position
- Does not require adjustment to indicate the level for various attachments

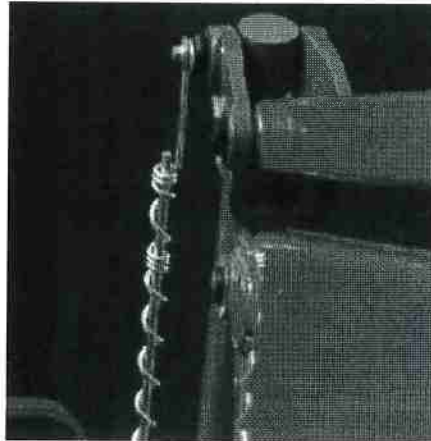
The bucket-level indicator has been redesigned to incorporate two tightly curled positions to signify the bucket and pallet fork level points. Now the rod can be seen at all positions and marked for any attachment-level position. This design eliminates freezing from occurring that causes failure of the indicator.

When the level indicator rod is even with the top of the lower coil cluster, the bucket is level. Attachments such as pallet forks are level when the top of the rod is aligned with the upper coil cluster.

Quote ID :25959004



Side view of the bucket-level indicator (H480 shown)



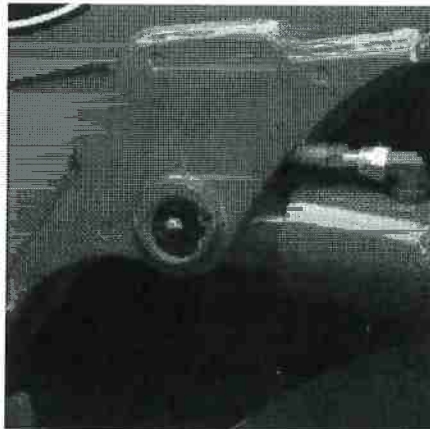
Operator view of the bucket-level indicator

Boom, mounting frame, and cylinders

Loader boom built for durability



Boom casting



Knee casting

The main structure of the loader, the boom is designed to maximize visibility for the operator to be able to complete their task easily and to provide sufficient strength to withstand years of rugged use. The boom is manufactured utilizing formed C-sections that are seam welded to create structurally sound tapered boom sections.

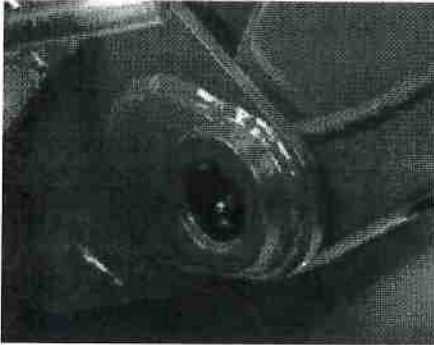
The front and rear boom sections are then joined at the knee with the rear section overlapping the front section to create a stronger joint versus just butting them together and using an overlapping plate to connect the two sections. At the torque tube, the boom sections are connected.

Cast-steel components are utilized at all the major boom pin connecting points, including the front section of the boom at the foot, in the rear boom, at the mast, and at the knee where the lift cylinder is connected. The reason for this is to provide a superior pin connection. This is accomplished for two main reasons:

- Pin alignment
- Ability to reduce the pin stress loads

Firstly, the ability to machine the pin hole completely from side to side rather than using welded-on bushings ensures superior pin alignment and thus less stress loading. Secondly, the part is able to connect to the boom with a greater surface area, again reducing stress concentrations. These cast components provide superior alignment and longer life than traditional bushing-type joints.

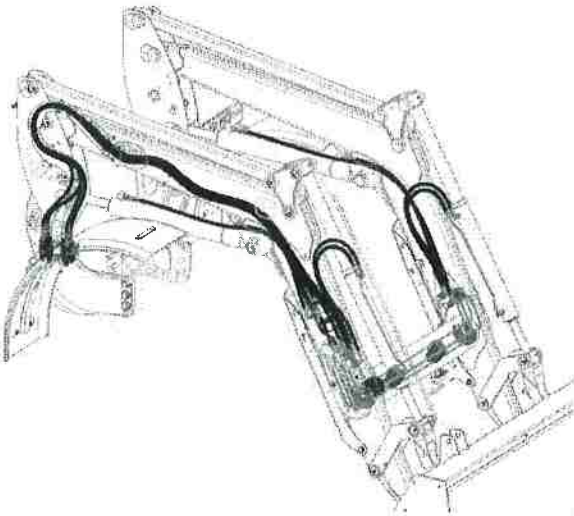
Quote ID :25959004



Foot casting

Key Features

Concealed oil lines improve appearance and reduce damage



Concealed oil lines through boom arm

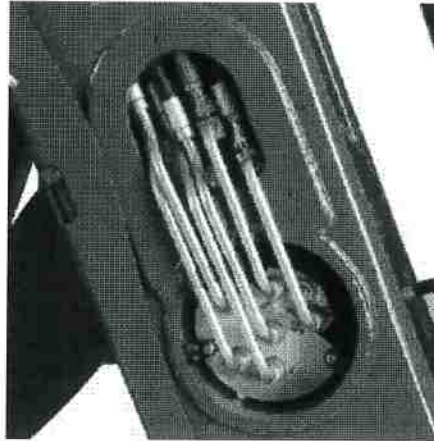
Over time, increased width in tractor hoods have caused issues with available space for running traditional oil lines of a loader along the boom, making them more susceptible to damage.

To improve this situation, the oil lines have been routed through the boom arm and the torque tube, improving line protection and the appearance of the loader.

Quote ID :25959004



Oil lines routed through the boom arm



Oil lines routed through the torque tube

Key Features

Loader removal (parking) made easy

John Deere loaders are easily removed and reinstalled on tractors without tools. The parking system allows removing or attaching the loader to the tractor in minutes without the need for tools.

To remove or park the loader, apply slight down pressure to the loader boom with the bucket dumped at approximately a 30-degree angle. With the tractor in park, lower the parking stands and place the mast pins in the open position.



Parking stands

Quote ID :25959004

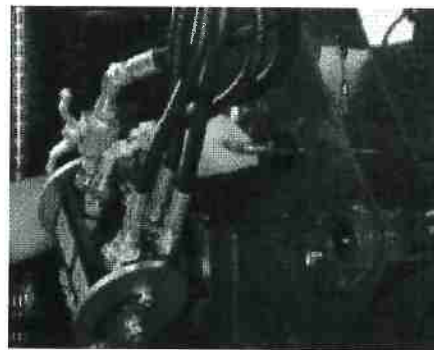
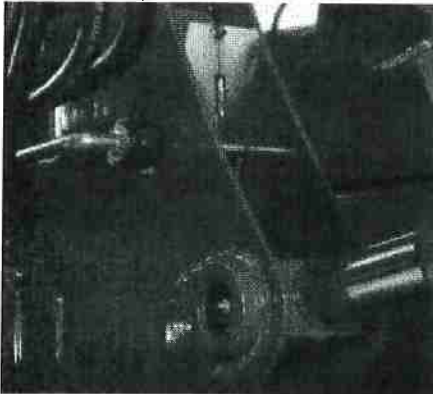
Removing or parking the loader



Parking stand in stored position

Removing parking stand

Utilizing the boom circuit with the tractor in neutral, rotate the mast forward until the mast has rotated past the pin location on the mounting frame by extending the lift cylinder. Now using the bucket circuit, roll back the bucket until the mast is removed from the pocket and will clear the tires.



Mast pin in the closed position

Rotating mast pin to the open position

With the tractor in park, shut the engine off and relieve the hydraulic pressure as indicated for the tractor (rotating the joystick). Disconnect or open the single-point hydraulic connector (or remove couplers if no single point is installed).

Quote ID :25959004



Mast pin in the open position



Masts rotate forward,
then bucket rolled back

Store the loader half of the single-point connector or hoses, and back away from the loader.



Disconnect/open single-
point hydraulic connection



Disconnect/open single-
point hydraulic connections



Single-point hydraulics disconnected

Quote ID :25959004

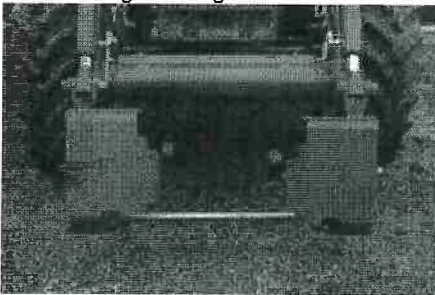


Parked loader

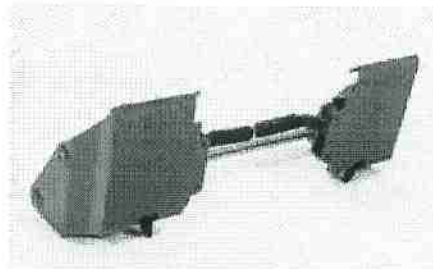
Attachment carrier

Skid steer-style carrier

The skid steer attachment carrier allows the use of skid steer-type attachments. One person can quickly change attachments without the use of tools by simply rolling the attachment back, lifting the levers, and then rolling the attachment forward and lowering to the ground.



Skid steer carrier



Skid steer carrier



N64W23760 Main Street
Sussex, Wisconsin 53089
Phone (262) 246-5200
FAX (262) 246-5222
Email: info@villagesussex.org
Website: www.villagesussex.org

MEMORANDUM

To: Parks & Recreation Board
From: Halie Dobbeck, Parks and Recreation Director
Re: Pickleball Open House Recap and Data Summary
Date: February 11, 2022

On Wednesday, February 2, 2022, Village staff hosted a Pickleball Options Open House in the Civic Center Board Room from 4:00-7:00 p.m. Village staff were present to answer questions and take comments on the 8 presented options. Members of the Village Board and Park Board were present. The online information and voting was available from 4:00 p.m. on February 2 until 12:00 p.m. on Wednesday February 9, 2022. The presented options are available for review in the board packet.

Each participant was asked to submit a first, second and third choice as well as given an opportunity to provide feedback. All participants were required to provide their name and address to determine residency, as requested by the Park Board. Names and addresses of participants have been removed from the data to provide anonymity. Public comments are available for review in the board packet.

A total of 113 people provided feedback; 38 in-person and 75 online. Of these total participants, 88 (78%) were residents and 25 (22%) were non-residents.

FIRST CHOICE SELECTION	TOTAL VOTES		RESIDENT VOTES (78%)		NON-RESIDENT VOTES (22%)	
	113	% Total Votes	88	% Resident Votes	25	% Non-Resident Votes
Butler Park (1+2)	48	42%	36	41%	12	48%
Armory Park	26	23%	19	22%	7	28%
Do Nothing	16	14%	15	17%	1	4%
Grove Fence	12	11%	8	9%	4	16%
Madeline Park	4	4%	4	5%	0	0%
Melinda Weaver Park	4	4%	3	3%	1	4%
Spring Green Park	2	2%	2	2%	0	0%
Mapleway Park	1	0%	1	1%	0	0%

The Village used this voting system in case participants had different top choices. Second and third choices followed this pattern very closely.

The data shows that the resident and non-resident preferences were very similar other than the third highest option of Do Nothing had higher resident appeal than for non-residents, which makes sense as non-residents were only likely participating if they were passionate about pickleball. The only three options to get above 10% for residents are Butler Park, Armory Park, and Do Nothing.

Butler Park had two options available with 57% of folks preferring Option 2 and 43% of folks preferring Option 1 within those that liked the Butler Park Options. Resident and Non-residents had the same pattern of preference for Butler Park.

The overall highest ranked choice was Butler Park Option 2 (All Votes and Residents)

The overall second ranked choice was Butler Park Option 1 (All Votes and Residents)

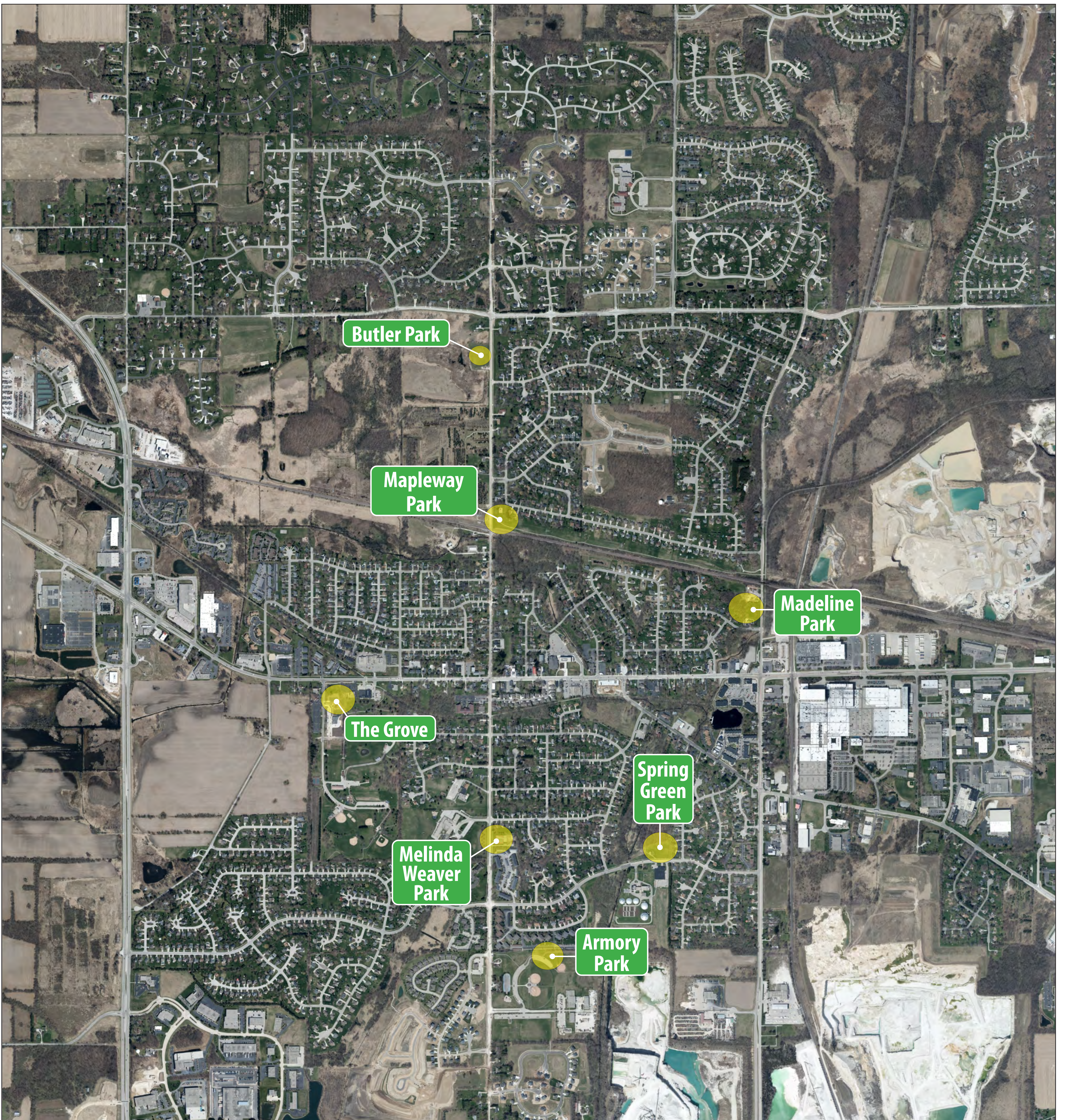
The overall third ranked choice was Armory Park (All Votes and Residents)

The overall fourth ranked choice was do nothing (Residents).

POLICY ISSUE:

The Park Board should give direction on which option(s) should be explored in more detail. Staff will work with the Pickleball Advisory Group on detailed plan development on those option(s) and bring back detailed plans to the Park Board for consideration. All projects will fit within the \$150,000 budget outlined by the Village Board.

PICKLEBALL OPTIONS



PICKLEBALL OPEN HOUSE

TONIGHT

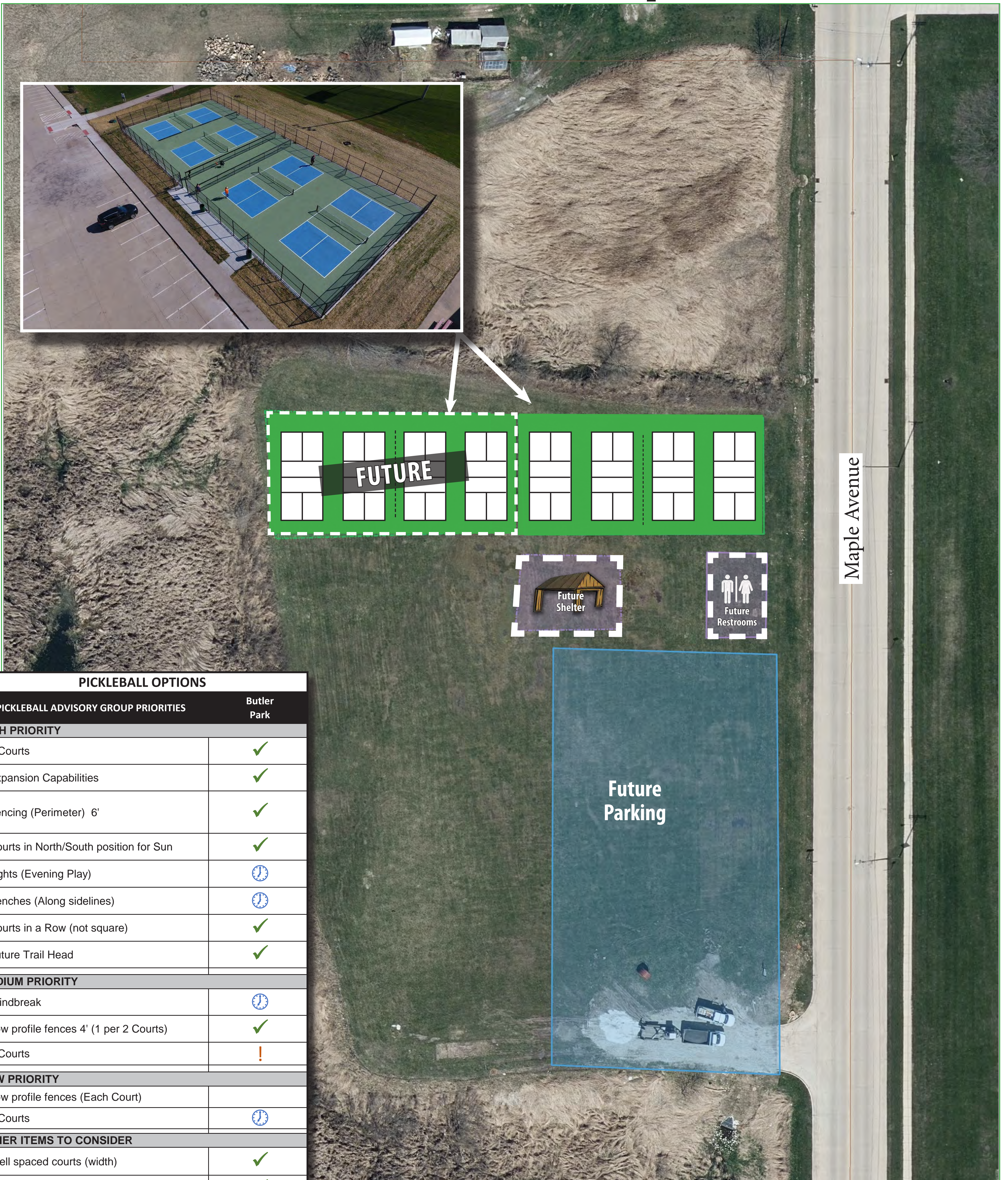
- A. Visit each station and learn about the location/options.
- B. Provide comments at table with each option.
- C. Complete the voting card, giving your top 3 choices.

Staff is available for questions.

NEXT STEPS

1. Park Board examines survey results (February).
2. Staff works with Pickleball Advisory Committee and top options to refine details (March).
3. Park Board and Village Board considers project and recommends for construction (late spring/early summer).
4. Write specifications for project bidding (summer).
5. If new construction is selected, target to bid is early 2023.

Butler Park: Option 1



PICKLEBALL OPTIONS	
PICKLEBALL ADVISORY GROUP PRIORITIES	Butler Park
HIGH PRIORITY	
4 Courts	✓
Expansion Capabilities	✓
Fencing (Perimeter) 6'	✓
Courts in North/South position for Sun	✓
Lights (Evening Play)	🕒
Benches (Along sidelines)	🕒
Courts in a Row (not square)	✓
Future Trail Head	✓
MEDIUM PRIORITY	
Windbreak	🕒
Low profile fences 4' (1 per 2 Courts)	✓
6 Courts	!
LOW PRIORITY	
Low profile fences (Each Court)	
8 Courts	🕒
OTHER ITEMS TO CONSIDER	
Well spaced courts (width)	✓
Court size (Length)	✓
2" wide lines	✓
Surface – asphalt vs. cushion material	! (asphalt)
Bathrooms	🕒
Parking	!
Limited Neighborhood Disruption	✓
Storage Box for Supplies	🕒
OTHER VILLAGE CONSIDERATIONS	
Sole Use Facility	✓
Shade Structure	🕒
Alignment with Park System Upgrades	✓
Cost	\$135K-\$150K
✓ Meets Priority 🕒 Future Possibility ! Meets Priority, but not optimal	

1. Grass onsite parking available today.
2. Six courts with no short fence possible.
3. Long-term Pickleball Complex possible.
4. Lighting possible in the future.

Butler Park: Option 2



1. Future lighting cheaper with this layout.
2. Long-term Pickleball Complex possible.
3. More ideal location for shelter and bathroom.
4. Future expansion to 12 courts possible.

PICKLEBALL OPTIONS	
PICKLEBALL ADVISORY GROUP PRIORITIES	Butler Park
HIGH PRIORITY	
4 Courts	✓
Expansion Capabilities	✓
Fencing (Perimeter) 6'	✓
Courts in North/South position for Sun	✓
Lights (Evening Play)	🕒
Benches (Along sidelines)	🕒
Courts in a Row (not square)	✓
MEDIUM PRIORITY	
Windbreak	🕒
Low profile fences 4' (1 per 2 Courts)	✓
6 Courts	! (\$ impact)
LOW PRIORITY	
Low profile fences (Each Court)	
8 Courts	🕒
OTHER ITEMS TO CONSIDER	
Well spaced courts (width)	✓
Court size (Length)	✓
2" wide lines	✓
Surface – asphalt vs. cushion material	! (asphalt)
Bathrooms	🕒
Parking	!
Limited Neighborhood Disruption	✓
Storage Box for Supplies	🕒
OTHER VILLAGE CONSIDERATIONS	
Sole Use Facility	✓
Shade Structure	🕒
Alignment with Park System Upgrades	✓
Cost	\$135K-\$150K
<small> ✓ Meets Priority 🕒 Future Possibility ! Meets Priority, but not optimal </small>	

Mapleway Park



PICKLEBALL OPTIONS	
PICKLEBALL ADVISORY GROUP PRIORITIES	Mapleway Park
HIGH PRIORITY	
4 Courts	✓
Expansion Capabilities	
Fencing (Perimeter) 6'	✓
Courts in North/South position for Sun	✓
Lights (Evening Play)	
Benches (Along sidelines)	
Courts in a Row (not square)	✓
MEDIUM PRIORITY	
Windbreak	🕒
Low profile fences 4' (1 per 2 Courts)	✓
6 Courts	
LOW PRIORITY	
Low profile fences (Each Court)	
8 Courts	
OTHER ITEMS TO CONSIDER	
Well spaced courts (width)	✓
Court size (Length)	✓
2" wide lines	✓
Surface – asphalt vs. cushion material	! (asphalt)
Bathrooms	
Parking	! (street)
Limited Neighborhood Disruption	
Storage Box for Supplies	🕒
OTHER VILLAGE CONSIDERATIONS	
Sole Use Facility	✓
Shade Structure	
Alignment with Park System Upgrades	!
Cost	\$145K
<small> ✓ Meets Priority 🕒 Future Possibility ! Meets Priority, but </small>	

1. Would require playground rebuild (already scheduled for replacement).

2. More grading work/less funds for amenities.

3. On-street parking only.

Madeline Park



PICKLEBALL OPTIONS	
PICKLEBALL ADVISORY GROUP PRIORITIES	Madeline Park
HIGH PRIORITY	
4 Courts	✓
Expansion Capabilities	
Fencing (Perimeter) 6'	✓
Courts in North/South position for Sun	✓
Lights (Evening Play)	
Benches (Along sidelines)	
Courts in a Row (not square)	✓
MEDIUM PRIORITY	
Windbreak	🕒
Low profile fences 4' (1 per 2 Courts)	✓
6 Courts	
LOW PRIORITY	
Low profile fences (Each Court)	
8 Courts	
OTHER ITEMS TO CONSIDER	
Well spaced courts (width)	✓
Court size (Length)	✓
2" wide lines	✓
Surface – asphalt vs. cushion material	! (asphalt)
Bathrooms	✓
Parking	
Limited Neighborhood Disruption	✓
Storage Box for Supplies	🕒
OTHER VILLAGE CONSIDERATIONS	
Sole Use Facility	!
Shade Structure	
Alignment with Park System Upgrades	
Cost	\$140K
✓ Meets Priority 🕒 Future Possibility ! Meets Priority, but not optimal	

1. Bathroom available today.

2. Stormwater and grading limits.

3. No expansion possible.

4. Parking complicated/limited.

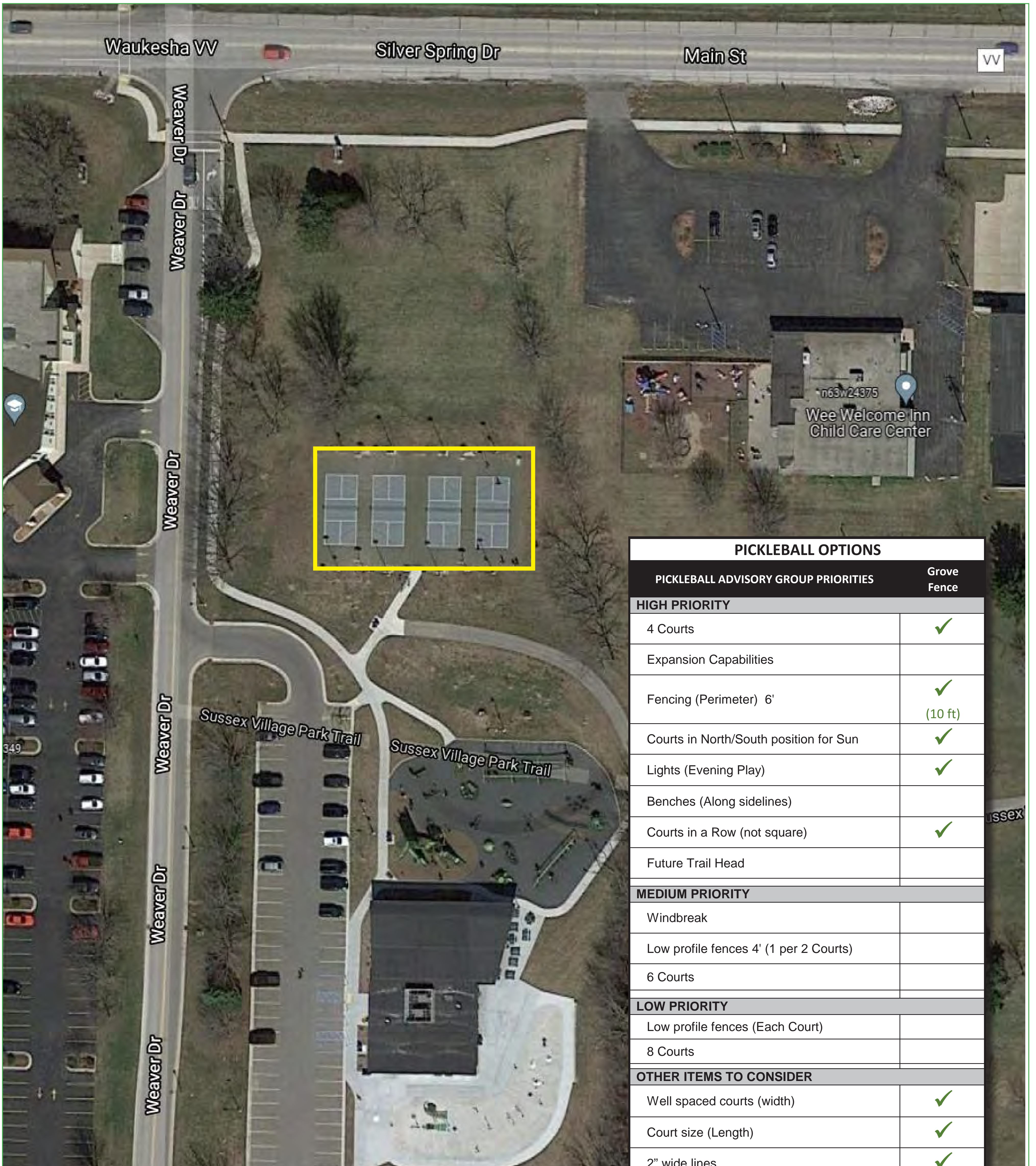
The Grove: No Change



PICKLEBALL OPTIONS	
PICKLEBALL ADVISORY GROUP PRIORITIES	No Change
HIGH PRIORITY	
4 Courts	✓
Expansion Capabilities	
Fencing (Perimeter) 6'	
Courts in North/South position for Sun	✓
Lights (Evening Play)	✓
Benches (Along sidelines)	🕒
Courts in a Row (not square)	✓
MEDIUM PRIORITY	
Windbreak	
Low profile fences 4' (1 per 2 Courts)	
6 Courts	
LOW PRIORITY	
Low profile fences (Each Court)	
8 Courts	
OTHER ITEMS TO CONSIDER	
Well spaced courts (width)	✓
Court size (Length)	✓
2" wide lines	✓
Surface – asphalt vs. cushion material	! (asphalt)
Bathrooms	✓
Parking	✓
Limited Neighborhood Disruption	✓
Storage Box for Supplies	🕒
OTHER VILLAGE CONSIDERATIONS	
Sole Use Facility	
Shade Structure	🕒
Alignment with Park System Upgrades	
Cost	\$0
<small>✓ Meets Priority 🕒 Future Possibility ! Meets Priority, but not optimal</small>	

1. No cost.
2. No impact to existing aesthetics.
3. Doesn't address growing popularity.

The Grove: Fence



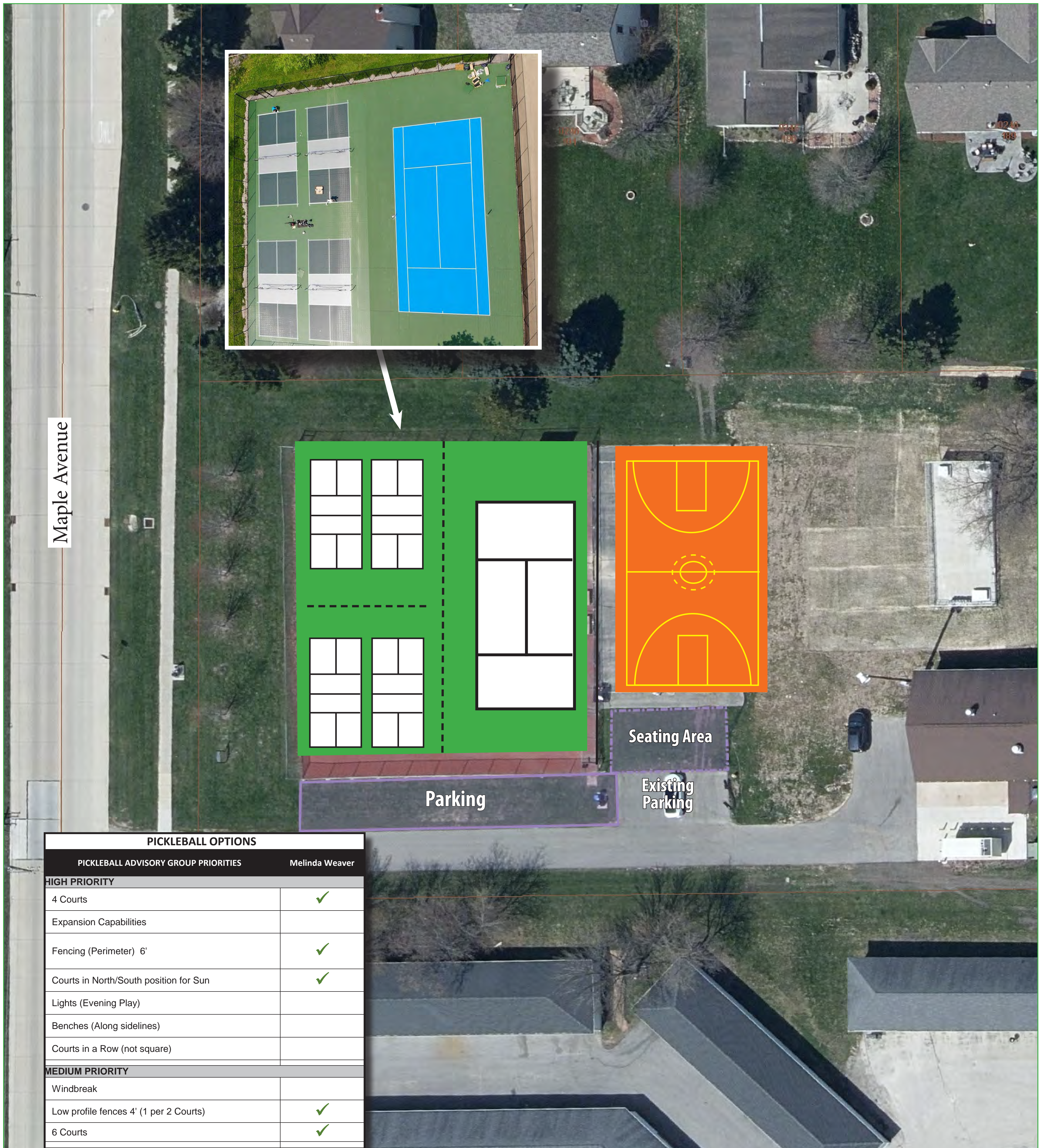
PICKLEBALL OPTIONS	
PICKLEBALL ADVISORY GROUP PRIORITIES	Grove Fence
HIGH PRIORITY	
4 Courts	✓
Expansion Capabilities	
Fencing (Perimeter) 6'	✓ (10 ft)
Courts in North/South position for Sun	✓
Lights (Evening Play)	✓
Benches (Along sidelines)	
Courts in a Row (not square)	✓
Future Trail Head	
MEDIUM PRIORITY	
Windbreak	
Low profile fences 4' (1 per 2 Courts)	
6 Courts	
LOW PRIORITY	
Low profile fences (Each Court)	
8 Courts	
OTHER ITEMS TO CONSIDER	
Well spaced courts (width)	✓
Court size (Length)	✓
2" wide lines	✓
Surface – asphalt vs. cushion material	! (asphalt)
Bathrooms	✓
Parking	✓
Limited Neighborhood Disruption	✓
Storage Box for Supplies	🕒
OTHER VILLAGE CONSIDERATIONS	
Sole Use Facility	
Shade Structure	🕒
Alignment with Park System Upgrades	
Cost	\$40K
✓ Meets Priority 🕒 Future Possibility ! Meets Priority, but not	

1. Limited cost.

2. Fence limits unauthorized use.

3. Fence impacts aesthetics of area.

Melinda Weaver Park



PICKLEBALL OPTIONS	
PICKLEBALL ADVISORY GROUP PRIORITIES	Melinda Weaver
HIGH PRIORITY	
4 Courts	✓
Expansion Capabilities	
Fencing (Perimeter) 6'	✓
Courts in North/South position for Sun	✓
Lights (Evening Play)	
Benches (Along sidelines)	
Courts in a Row (not square)	
MEDIUM PRIORITY	
Windbreak	
Low profile fences 4' (1 per 2 Courts)	✓
6 Courts	✓
LOW PRIORITY	
Low profile fences (Each Court)	
8 Courts	!
OTHER ITEMS TO CONSIDER	
Well spaced courts (width)	!
Court size (Length)	✓
2" wide lines	✓
Surface – asphalt vs. cushion material	! (asphalt)
Bathrooms	
Parking	✓
Limited Neighborhood Disruption	✓
Storage Box for Supplies	🕒
OTHER VILLAGE CONSIDERATIONS	
Sole Use Facility	!
Shade Structure	🕒
Alignment with Park System Upgrades	✓
Cost	\$140K
✓ Meets Priority 🕒 Future Possibility ! Meets Priority, but not optimal	

1. Courts need to be resurfaced anyway.
2. Pickleball already played here.
3. Parking added.
4. Loss of one tennis court.
5. Potential for shade structure/seating.

Spring Green Park



PICKLEBALL OPTIONS	
PICKLEBALL ADVISORY GROUP PRIORITIES	Spring Green
HIGH PRIORITY	
4 Courts	✓
Expansion Capabilities	✓
Fencing (Perimeter) 6'	✓
Courts in North/South position for Sun	✓
Lights (Evening Play)	
Benches (Along sidelines)	🕒
Courts in a Row (not square)	✓
MEDIUM PRIORITY	
Windbreak	🕒
Low profile fences 4' (1 per 2 Courts)	✓
6 Courts	🕒
LOW PRIORITY	
Low profile fences (Each Court)	
8 Courts	
OTHER ITEMS TO CONSIDER	
Well spaced courts (width)	✓
Court size (Length)	✓
2" wide lines	✓
Surface – asphalt vs. cushion material	! (asphalt)
Bathrooms	
Parking	! (street)
Limited Neighborhood Disruption	
Storage Box for Supplies	🕒
OTHER VILLAGE CONSIDERATIONS	
Sole Use Facility	✓
Shade Structure	
Alignment with Park System Upgrades	
Cost	\$135K
✓ Meets Priority 🕒 Future Possibility ! Meets Priority, but	

1. Near residents—potential conflicts.
2. On-street parking only.
3. Limitations on lights and bathrooms.

Armory Park



PICKLEBALL OPTIONS	
PICKLEBALL ADVISORY GROUP PRIORITIES	Armory Park
HIGH PRIORITY	
4 Courts	✓
Expansion Capabilities	✓
Fencing (Perimeter) 6'	✓
Courts in North/South position for Sun	✓
Lights (Evening Play)	🕒
Benches (Along sidelines)	🕒
Courts in a Row (not square)	✓
MEDIUM PRIORITY	
Windbreak	🕒
Low profile fences 4' (1 per 2 Courts)	✓
6 Courts	🕒
LOW PRIORITY	
Low profile fences (Each Court)	
8 Courts	🕒
OTHER ITEMS TO CONSIDER	
Well spaced courts (width)	✓
Court size (Length)	✓
2" wide lines	✓
Surface – asphalt vs. cushion material	! (asphalt)
Bathrooms	✓
Parking	✓
Limited Neighborhood Disruption	✓
Storage Box for Supplies	🕒
OTHER VILLAGE CONSIDERATIONS	
Sole Use Facility	!
Shade Structure	🕒
Alignment with Park System Upgrades	!
Cost	\$130K
✓ Meets Priority 🕒 Future Possibility ! Meets Priority, but not optimal	

1. Long-term potential for additional amenities.

2. Some conflict in evening with baseball.

3. Costs on lower end.

Categorized Comments from Pickleball Options

Comments were received both in-person and online. To the best of staff's ability the comments are categorized based on the main topic of the comment. If context were apparent based upon votes, clarifying comments have been added in [brackets].

General

Kudos for recognizing the need. Thank you.

These are all great options, and the proximity to Village Hall is great.

Great options! What would be a future pickleball complex? An indoor facility?

Thank you for considering this. As I said at an open meeting some time ago, we are very appreciative of the initial courts installed at The Grove and only look to enhance the playing experience for all.

I'm out of town so couldn't attend the meeting. Are there possibilities for a port a john if a restroom is not initially available? Is there any talk of a paddle holder in the budget? I'm currently playing in Florida and the outside courts have a wonderful paddle holder which keeps track of whose next in line, which is ideal for large numbers of people playing.

I feel its best to put the courts where their is adequate inferstructure to deal with traffic.

Fix the parks , pickle balls courts,tennis courts, ball diamonds, play ground equipment, that the village has know before you look to build more neglected parks..

Frence windbreak is a MUST. Pickleball is a wiffleball sport, any amount of wind ruins the game!

Don't put a fence up without the wind guard this is almost pointless.

Lights are soft of a must too

Every court MUST be individually fenced off, its super annoying when another court's ball disrupts play.

Allow for enough space between courts for example playing in the civic center "gym" is like playing in a shoe box...

Benches are the least important item to spend money on.

Concerns

The village is spending way too much time and money on pickleball. And it comes at the expense of the larger community, particularly youth who have hardly any options. Dual purpose courts are awful and are constantly monopolized by pickle ball. This is a waste of resources.

Keep the recreational activities at Village park, Armory park which are built and designed for these activities. There is parking and lights already there. No need for new infrastructure or more sidewalks. Leave the rural parts of Sussex alone. The way they were meant to be. Let nature live also. We moved here for the rural atmosphere. Let's keep it.

Who is making the decision to set aside \$150,000 and wanting to invest it in pickle ball? We pay taxes into the overall bucket that funds this. Seems like someone is influencing this decision for personal hobby benefits. I vote no investment in this. Maybe someone can sponsor it and pay for it instead of taxpayers.

Larger, existing parks should be considered. Don't agree with adding pickle ball near/around residential areas! Plus, there should be no need to add something like this that would require parking on the street which is the reason for me choosing Butler Park(s) and the Armory.

Not a good idea to spend \$150000.

Would rather see the village make better use of funds.

From my observation I rarely see people playing picke-ball, therefore how would this benefit making more courts elsewhere? Especially building more parks right by houses will be disturbing to those living there already. It is different if the park were to already be there and you move in, but people have been living their whole lives without it and living in peace and now it is being disrupted. If there has to be a park built, build is somewhere already established that already has infrastructure.

I don't see the Pickle Ball court on Main Street being used that often and don't see a need to add another court anywhere else. Especially in parks that don't already have the infrastructure for it. To start over from scratch in some of the parks you have listed, makes no sense. You have Butler Park that is a nature preserve and now you want to take that away from the wildlife and also from a lot of us that moved out here for that nature feel. We don't need to fill every green space we have in Sussex with concrete and buildings. You are starting to take away too much of the green space. Everywhere we look it's another building and more cement, we are totally losing our small-town feel! "IF" more Pickle Ball courts are needed, add them to the Civic Center, the Splash Pad area, Village Park or the Armory. These areas have enough space to add them and already have most of the amenities that are needed for new courts, which will be less of an expense for all of us.

Need to keep our green places.

Need green space

Is it possible to leave any green space in the village? There is no need for additional pickle ball courts. Like tennis, basketball and tetherball this will be another passing fad. There are courts, hoops and pole throughout the village that are seldom or never used as intended. Not one family within maple view estates would welcome such a project. The butler reserve attacks people who love to view nature or what is left of it. More asphalt and lights for a few months of use?

Common sense says this is a terrible idea

[name removed for privacy]

We have not spent much time at all of the local options, but Madeline Park seems like it would be very problematic with parking (as we have seen/had this experience just for the playground). I personally feel the same about the street parking at the Maple[way] option. Potential conflicts with other events at Armory make this option seem less ideal for all parties involved.

The options with street parking shouldn't be an option. Too much congestion already and not safe. Armory park best due to largest area available.

If you're expecting the popularity to continue and grow, any location that only offers on-street parking is a huge negative.

Butler

Butler Preserve is a wonderful green space to enjoy wildlife and many of us walk our dogs there. I think it should be kept as a natural green space when we have plenty of other established parks.

These options (Grove, Armory, Madeline) utilize space people already visit. Grove seems like a fiscally responsible option. Please do not use green spaces like Butler.

The Grove and Armory already have sport areas. Let's keep these type of activities to already established parks. spaces are places people already visit. Please protect our green spaces like Butler and leave it alone.

With all the subdivisions going up the poor animals are getting pushed out more and more.

We live near the conservacy [Butler] and watch the deer, geese other wildlife bad use this area. And people who bring their dogs for walking.

We need to preserve some green space.

There are other places that are already suitable with parking etc than to have to tap into this space.

When the Butlers sold their property to the Village for the very generous amount the agreement was made that this area would not be developed in any way. Placing a pickleball area in the Nature Park would tarnish the look of the beautiful green space. Use an area that is already developed to add courts.

Butler Nature Park should remain Green Space

It is our understanding that when the Butler's family donated conservancy land it was with the understanding that it would never be developed.

sooo legally how can this particular site even possibly being considered?

There is no need for a pickle ball court on a nature preserve [Butler], when I've observed that little to no people are using the pickle ball courts down by the village park. The lights needed to light up the court will be disturbing to the houses and families that live near there. If you're going to build a pickle ball court or any court, build where there is already courts with no houses or people. Building on a nature preserve will be disturbing the animals that live there and pushing them out of their homes. My family and I see deer crossing through our backyard and frankly we like seeing them, so with building a pickle ball court we won't be able to see that anymore.

Since Butler is currently just a field it would be nice to have a high level understanding of when to expect the other updates to occur (i.e. parking, shelter, etc..)

We don't need pickle ball courts in a reserve area

I feel that this project should be done to enhance one of the existing parks. When we bought our house (almost across from Butler Persevere) I LOVED the fact that it was a preserve and it was my understanding that nothing would go there nor would it be lit up with lights taking away from the beautiful sunsets and peace and quiet that part of maple offers. I feel that there are better options over Butler that just make more sense for instance the village paid money to move the train depot to Madeline park. Adding the courts there would draw more people there to see the historic depot.

Grove

The Grove with fence and lights.

Getting added space where Sussex could get more revenue for pickleball playing would help pay for these ideas especially because most taxpayers don't play pickleball so won't care how many courts are in the village. With that said; Sussex already stands out for having indoor and outdoor designated pickleball facilities, but they aren't ideal, so adding new, better planned out spaces is great.

If anything could be eliminated from the Armory list to cut the cost back enough to allow for also getting the fencing around the Grove courts, that would be optimal. Not sure why the Grove courts need to be 10' while fencing around new courts are 6' but maybe that's due to the basketball courts being on the pickleball courts.

Thankyou for the well planned out offerings and an even bigger thank you for asking us pickleballers for our opinions.

I don't live in Sussex but grew up there on Main St and have not found a better place to play in the last 6 years. Good luck with your decisions

I am a big fan of pickle ball and tennis and I love the idea of more courts that are not dual use. It is very hard to play on the ones while basketball is going on and interferes with both sports (potentially unsafe as people can run into each other). Also love the idea of fencing so we don't have to chase down balls.

I would love to see a regular tennis court as well considered for the future as the ones at village park are in terrible condition.

Please take out the basketball hoops at the Grove. That's a great pickleball facility, especially with the lights. 2 people playing half court basketball will eliminate 2 pickleball courts. Pave a new basketball court area to the north in the grass area.

Tennis is still important in the Village. Don't take out one of the courts at Melinda Weaver. Get rid of the slippery sport court on the courts at Village Park and resurface those. Those courts are a great set up with the lights but serious tennis players will never play there because the surface is so slippery.

Fencing at The Grove is a must.

Given the age of the players in the pickleball leagues (primarily retired), schedule those leagues for earlier in the day - have them end by 5:00. Those that work during the day will then have courts available for playing in the evening. Too many nights are taken up by the leagues right now.

Publicize how Village residents can use the indoor courts at the Civic Center during the winter. They're free for residents, right?

Make the court lock boxes available for residents other than those in the leagues. Regular non-league players should be able to use the portable fences until new ones are installed.

Thank you for constructing the courts at the Grove and for expanding pickleball in the Village with this new proposal.

[email address removed for privacy]

I would like to have seen better options for the Grove, separating the basketball from the pickleball courts.

Additionally, [at the Grove] the basketball courts should be moved adjacent to and not inside of the pickleball courts and fence off the pickleball courts. As it is currently, it is unfair, particularly to the kids that wish to play basketball and at the same time interferes with the pickleball players, making it undesirable and irritating for both.

If something is to be done, it should be done at an existing park, where there are already existing bathrooms. Putting a fence around the existing courts at Village Park makes sense because it improves an existing facility. The Village should not be taking on the creation of additional parks that then have to be maintained by Village staff.

Armory

Was wondering why the volleyball area at Armory Park was chosen instead of the skateboard area as this is rarely used and needs updates anyways. In the skateboard area, I believe there might be an area to tap into for lighting of which would make this a more desirable location within Armory Park. Thank you for your time allowing us to review and choose.

this [Armory Park] is one of the parks that has the potential to be expanded but it looks like it is just kind of crammed in between two baseball diamonds where the volleyball court was.

on our Pickleball advisory committee we suggested putting it over by the skating area on the southside as there were picnic tables over in that area and also a pole that has power to it so lighting would not hopefully be an issue running the power to the Pickleball courts.

just trying to keep the cost down to have the lights installed when the pickle ball courts go in and do it all in one shot.

if the courts were arranged like butler option number two that would also help drive the cost down. Thank you



N64W23760 Main Street
Sussex, Wisconsin 53089
Phone (262) 246-5200
FAX (262) 246-5222
Email: info@villagesussex.org
Website: www.villagesussex.org

MEMORANDUM

To: Parks & Recreation Board
From: Halie Dobbeck, Parks and Recreation Director
Re: Tournament Rain Date Policy
Date: February 11, 2022

Context:

The Jr. Chargers Baseball Club has requested that the Village hold fields for a potential tournament “rain date” (inclement weather) on Sunday June 5, 2022 following their scheduled tournament on Saturday June 6, 2022.

History:

In the past, the Village has upheld this request, however, with demand for field usage increasing significantly, it has made ball fields a limited resource.

Request for Policy:

A policy for inclement weather when pertaining to a tournament will allow for clear direction from Village staff to ball field tournament users.

Potential options for the request for a “rain date” tournament policy are:

1. Allow a “rain date” with no fees. (Past Practice, but not approved policy)
2. Do not allow a “rain date” without paying and reserving as a part of the tournament. (This is the most expensive option. It will result in the greatest revenue for the Village of Sussex, but costs may be a hindrance to the tournament organization.)
3. A renter that has a tournament scheduled and paid for will have the right of first refusal for any requests that come in for the declared “rain date”. If a request for a field rental is submitted on the desired “rain date”, Village staff would notify the tournament organizer; they would have a reasonable time to refuse that field rental and pay for that field (regardless of use) to hold it. (This is the least expensive option for the tournament organization, but guarantees the Village no lost potential revenue on that date.)
4. A renter that has a tournament scheduled and paid for will have the opportunity to pay for fields at a practice rate (\$20/field) for all desired fields to have a reserved rain date. (This option will result in revenue for the Village if the “rain date” isn’t utilized.)

5. A renter that has a tournament scheduled and paid for will have the opportunity to pay for fields at a game rate (\$40/field) for all desired fields to have a reserved rain date. (This option will result in revenue for the Village if the “rain date” isn’t utilized.)

In all potential options, if a “rain date” is utilized for a tournament, all respective tournament fees will apply to that date except in option 1, whereby the Village had the potential to lose revenue if some prep work had already occurred for the day prior (i.e. rain started half way through the day). Additionally, if the fields were already prepared by Village employees prior to the organizations decision to cancel their tournament, the preparation fees will still be retained.

Staff Recommends: Park Board select “Option 3” as the Tournament Rain Date Policy allowing the tournament the right of first refusal for all field requested on the declared “rain date”.



N64W23760 Main Street
Sussex, Wisconsin 53089
Phone (262) 246-5200
FAX (262) 246-5222
Email: info@villagesussex.org
Website: www.villagesussex.org

MEMORANDUM

To: Park and Recreation Board, Village Board
From: Halie Dobbeck, Parks and Recreation Director
Date: February 11, 2022
Re: Farmers Market Application

On February 7, 2022 the Village was notified that the VFW Community Market would not be running a market this year.

Linda Saladin, who was an original coordinator of the Sussex Farmers Market when it first opened in 2015, has approached the Village with an interest in revitalizing the original summer market. This market was an extension of the Friends of Parks and Recreation Group. After time away from the market, the market board members wish to bring back the market in its original form. Ms. Saladin has expressed that they would like to put together a Summer Market and potentially a Winter Market in the fall.

Ms. Saladin is looking for the Park Board's approval to proceed in this venture in order to implement planning for the Summer Farmers Market 2022 and potential Winter Market 2022-2023.

Ms. Saladin has requested that the Park Board:

- Extend the existing fee structure of no charge for the summer market plaza space and \$125 per market for the winter market.
- Promote the market through print and social media venues as available.
- Place a banner on the front of the Civic Center fence promoting the market.

Estimated Final Waitlist Totals for 2021*

Class	# People on Waitlist	Notes
Group Fitness Yolates Saturday	1	
Group Fitness Zumba Toning: *	1	
Adult Trips Door County Treasures	1	Shared Program, no addtl. capacity
Fundamental Dance Creative Movement	1	
Group Fitness Gentle Barre: *	1	
Group Fitness Next Level Gentle Yoga:	1	
Group Fitness Next Level Gentle Yoga: *	1	
Green Thumb Planting Event In Person - Green Thumb	1	Special Event - Limited Supply due to Donation
Green Thumb Planting Event Pick Up - Green Thumb	1	Special Event - Limited Supply due to Donation
Hooper Hands Basketball 101 - 6-8	1	
Hooper Hands Basketball 101 4-5	1	
Ice Skating Learn to Skate 7-12	1	
Pickleball Pickleball for Beginners	1	
Preschool Sports First Sport Sampler (Sports Explorer)	1	
Tae Kwon Do Early SKILLZ -	1	External Program - limits capacity
Tae Kwon Do Early SKILLZ -	1	External Program - limits capacity
Tae Kwon Do Early SKILLZ -	1	External Program - limits capacity
Tennis Advanced Beginner/Intermediate: Ages 9-12	1	
Tennis Beginner: Ages 9-12	1	
Yoga & Meditation Yoga:	1	
6-8-Week Dance Dance Camp - Happy Feet	2	Shared Program, no addtl. capacity
6-8-Week Dance Introduction to Ballet & Tap	2	Shared Program, no addtl. capacity
Family Art Birdhouse Painting	2	
Group Fitness Next Level Gentle Yoga:	2	
Hooper Hands Basketball 101 4-5 9:15	2	
Hooper Hands Basketball 101 6-8	2	
Hooper Hands Pass-Shoot-Score	2	
Pickleball Instructional Pickleball for Beginners - PM	2	
Pickleball Instructional Pickleball for Beginners -	2	
Preschool Sports First Sport Sampler (Sports Explorer)	2	
Preschool Sports Grown Up + Me Sports	2	
Tae Kwon Do Early SKILLZ	2	External Program - limits capacity
Tennis Introduction to Tennis	2	
Tumbling Introduction to Tumbling	2	New Sussex Class Added
6-8-Week Dance Dance Camp - Spirit Riding Free	3	Pewaukee Program
6-8-Week Dance Kick/Poms	3	
Adult Trips Christmas at House on the Rock	3	Shared Program, no addtl. capacity
Day Camp Week 08: American Ninja Warrior	3	Limited by Space
Family Art Henna Tattoo	3	
Ice Skating Learn to Skate 4-6	3	County Run Program, capacity set by County
Pickleball Instructional Pickleball for Beginners - AM	3	
Tennis Advanced Beginner/Intermediate: Ages 9-12	3	
Yoga & Meditation Yoga:	3	
Fundamental Dance Introduction to Ballet & Tap	4	
Pickleball Instructional Pickleball for Beginners Evening	4	
Preschool Sports First Sport Sampler (Sports Explorer)	4	
Tennis Beginner: Ages 5-8	4	
Yoga & Meditation Yoga:	4	
Events A Charlie Brown Holiday Dinner Party	5	Special Event - Limited by Space
Recreational Tree Climbing	5	County Run Program, capacity set by County
Tumbling Introduction to Tumbling -	5	New Sussex Class Added
Hooper Hands Basketball 101 - 4-5	6	
Recreational Tree Climbing	6	County Run Program, capacity set by County
The Stingray Allstars - Wisconsin Beginner Tumbling -	6	No longer partnered. Began offering our own classes.
Pickleball Evenings -	7	
The Stingray Allstars - Wisconsin Tiny Tumbling -	7	No longer partnered. Began offering our own classes.

Estimated Final Waitlist Totals for 2021*

Class	# People on Waitlist	Notes
Preschool Sports Grown Up + Me Sports	8	
The Stingray Allstars - Wisconsin Tiny Tumbling -	8	No longer partnered. Began offering our own classes.
6-8-Week Dance Disney Dance	9	Added a session and still had a waitlist.
Pickleball Pickleball Mornings	9	
Tumbling Introduction to Tumbling -	9	New Sussex Class Added
Ice Skating Learn to Skate 4-6	10	County Run Program, capacity set by County
Recreational Tree Climbing	10	County Run Program, capacity set by County
Events Holiday Swag	11	Special Event - Limited Supply due to Donation
Tennis Beginner: Ages 5-8	11	
Tennis Beginner: Ages 5-8	12	
Ice Skating Learn to Skate 4-6	13	County Run Program, capacity set by County
Pickleball Pickleball Evenings	14	
Pickleball Instructional Pickleball for Beginners - PM	14	
The Stingray Allstars - Wisconsin Beginner Tumbling -	14	No longer partnered. Began offering our own classes.
The Stingray Allstars - Wisconsin Tiny Tumbling -	18	No longer partnered. Began offering our own classes.
Ninja Warrior Camp	21	Shared Program, no addtl. Capacity.

Waiting List Total	333	<i>Est. percentage of Combined Participant Waitlist</i>
Total Participants in 2021	6940	5%

Total Classes Offered in 2021	486	<i>Percentage of Classes with Waitlist Sizes</i>
Total Classes with Waitlists	72	15%
# Classes with 1-2 people on Waitlist	34	47%
# Classes with 3-5 people on Waitlist	17	24%
# Classes with 6-9 people on Waitlist	10	14%
# Classes with 10+ people on Waitlist	11	15%



N64W23760 Main Street
Sussex, Wisconsin 53089
Phone (262) 246-5200
FAX (262) 246-5222

Email: info@villagesussex.org

MEMORANDUM

To: Parks & Recreation Board
From: Halie Dobbeck, Parks and Recreation Director
Re: Baseball Field Rental Priorities from Peer Communities
Date: February 11, 2022

At the November 2021 Park Board meeting, the Board requested that data be assembled from peer communities on how they prioritize field reservations for multiple organizations. The general, overall feedback is that most of our peer communities only have one renter (or have renters that only use specific fields) and they work these field requests in with their recreation department's programming.

Sussex's existing practice is below.

1. **Department Sponsored Leagues/Programs/Activities**
2. **Hamilton School District, Sussex Baseball Land o Lakes (Cardinals), private schools, associations, businesses, and resident-based leagues (Leagues which 75% of the participants are residents of Sussex.) Leagues must provide rosters with individual player addresses prior to the first field reservation date.**
3. **Non-Resident Based Leagues**
4. **General Rental Usage**

In addition to this existing practice, it is common practice that Village staff work to prioritize game field rentals over practice field rentals and may alter the field requests accordingly.

2021 initial field reservations requests are below. *These numbers do not include the fields that were claimed after the initial schedule was presented.*

SLYBA: 138 fields were requested. 13 instances where they were not given their "preferred field" due to game field requests from other organizations. All requests were scheduled.

Jr. Chargers Baseball: 317 fields were requested. 25 instances where they were not given their "preferred field" due to game field requests or requests for practice fields that already had a practice scheduled on them. 8 requests were not scheduled.

Jr. Chargers Softball: 115 fields were requested. 45 instances where they were not given their "preferred field" due to game field requests or requests for practice fields that already had a practice scheduled on them. 20 requests were not scheduled.

Pewaukee Predators: 168 fields were requested. 77 requests were not scheduled.

Merton Mavericks: Make all requests after initial schedule is released.

As presented at the November 2021 board meeting, below is the 2021 organization hierarchy.

Organization Name	Percentage of Sussex Residents	Actual Number of Sussex Residents	Total Enrolled	Practice Field Rentals 2021	Game Field Rentals 2021	Total Revenue 2021
Sussex-Lisbon Youth Baseball Association	57%	174	309	87	51	\$2,835
Jr. Chargers Baseball	48%	65	136	186	123	\$6,480
Jr. Chargers Softball	24%	11	46	79	15	\$1,630
Pewaukee Predators	9%	5	53	80	11	\$1,530
Merton Mavericks	27%	3	11	27	2	\$465
						\$12,940 (+ tax)

Peer Community data on field reservations priority:

Lisbon

1. SLYBA (Sussex Lisbon Youth Baseball Association)
2. Lannon Stonemen (use on Fridays when SLYBA does not have games)

City of Pewaukee & Village of Pewaukee

1. Department Sponsored Leagues/Programs/Activities
2. External Organizations (they only have 1)
3. First Come, First Served if availability exists

Elm Grove

1. Department Sponsored Leagues/Programs/Activities
2. External Organizations (they have 1 – in the past they had 2 but they were affiliated with each other so they built the schedule together)
3. Residents

Germantown

1. Department Sponsored Leagues/Programs/Activities
2. Largest usage to smallest usage (but currently only have one organization)

Hartford

1. Local Baseball Club (has Priority Agreement; \$1,000 for a guaranteed field (dragged) all season) – was original and only renter until 2020.
2. High School Teams
3. Department Sponsored Leagues/Programs/Activities
4. Fastpitch Softball Club
5. First Come, First Served for remaining fields

Hartland

1. Department Sponsored Leagues/Programs/Activities
2. Land O'Lakes, Lake Country Youth Baseball, Hartland Athletic Advancement Association, private schools, public schools, associations, businesses, resident-based leagues and Residents (no defined residency percentage)
3. Non-resident based league sand non-residents

**Hartland's Park Board is actively reviewing this policy in 2022.*

Oconomowoc

1. Department Sponsored Leagues/Programs/Activities
2. School District High School Teams
3. Community Organizations as approved by the Parks and Recreation Board (school district clubs or groups)
4. Independent Teams/Groups/Leagues – Resident-Based (minimum 75% residents)
5. Non-Resident Groups
6. Non-Resident Tournaments

**The City of Oconomowoc through the Parks, Recreation and Forestry Department promotes the fair and equitable use of community facilities by scheduling field reservations and assisting local resident based organizations and groups in providing a wide range of opportunities for the overall community. The Department reserves the right to regulate aspects of applications in order to most effectively serve all resident interests.*

Grafton

First come, first served.

Delafield

First come, first served.

* Doesn't get a lot of reservations.



N64W23760 Main Street
Sussex, Wisconsin 53089
Phone (262) 246-5200
FAX (262) 246-5222
Email: info@villagesussex.org
Website: www.villagesussex.org

MEMORANDUM

To: Parks & Recreation Board
From: Halie Dobbeck, Parks and Recreation Director
Re: 2021 End of Year Fund Update
Date: February 11, 2022

2021 Facility Rental Revenues: \$ 63,182.88

*See Board Packet for Details

2022 Sussex Area Service Club 10 Year Contract Balance: \$62,953

*The Grove Oak Room Rental for Blood Drive on 6/1/2022 (\$412.50) is reflected in this balance.

2022 Lions Club 10 Year Contract Balance: \$113,663

*Light Diamond Rental for Flag Football 2022 (\$350.00) is reflected in this balance.

*Lions Daze 2022 Village Park Rental (\$6,855.00) is reflected in this balance.

*The Grove Oak Room Rental for Blood Drives (6) (\$2,640) is reflected in this balance.

2021 Tree Preservation Funds: \$77,145.75

*Prestwick \$41,345.75

*Woodland Trails \$35,800.00

Most of these funds will be returned upon completion of tree planting at the developments.

2021 Revenues By Facility

Facility	2021 Revenue	Notes
Armory Park Ball Field #1	\$ 2,825.00	
Armory Park Ball Field #2	\$ 2,645.00	
Armory Park Ball Field #3	\$ 2,480.00	
Armory Park Ball Field #4	\$ 1,815.00	
Village Park Ball Field #1 South	\$ 2,290.00	
Village Park Ball Field #2 Central	\$ 2,125.00	
Village Park Ball Field #3 North	\$ 2,345.00	
Village Park Hardball Diamond	\$ 2,695.00	
Village Park Lighted Diamond	\$ 2,255.00	Total Field Revenue: \$21,475.00
Armory Park Armory Park Concession Stand with Shelter	\$ 499.00	
Armory Park Soccer Field #1-#6	\$ 4,440.00	
Civic Center 1st Floor Meeting Room	\$ 20.00	
Civic Center Board Room	\$ 4,010.00	
Civic Center Community Room	\$ 3,805.00	*Does not include New Hope Church rental revenue
Civic Center Craft Room	\$ 140.00	*Does not include New Hope Church rental revenue
Civic Center Multipurpose Room	\$ 900.00	Sussex Fresh Market
Civic Center Studio	\$ 250.00	
Madeline Park Madeline Park Train Depot	\$ 2,137.00	
The Grove Maple Room & Kitchen	\$ 6,445.50	
The Grove Oak Room	\$ 5,157.00	
The Grove The Grove Splash Pad	\$ 400.00	
Village Park Circlemasters Green Space	\$ 325.00	Circlemasters and part of larger Events
Village Park Disc Golf Course	\$ 1,497.00	
Village Park Early Days Open Air Shelter	\$ 270.00	
Village Park Lions Open Air Shelter	\$ 4,207.00	
Village Park North Open Air Shelter	\$ 1,030.00	
Village Park Village Park Concession Stand Shelter	\$ 180.00	
Village Park Village Park Lion's Building	\$ 440.00	
*New Hope Church Rental Revenue	\$5,555.38	Reduced rate 3rd quarter due to COVID
Total Facility Revenue	\$ 63,182.88	