



N64W23760 Main Street
Sussex, Wisconsin 53089
Phone (262) 246-5200
FAX (262) 246-5222
Email: info@villagesussex.org
Website: www.villagesussex.org

Architectural Review Board Agenda
4:00 PM Wednesday, November 1, 2023
Sussex Civic Center – Committee Room Second Floor

Pursuant to the requirements of Section 19.84, Wis. Stats., notice is hereby given of a meeting of the Village of Sussex Architectural Review Board, at which a quorum of the Village Board may attend in order to gather information about a subject which they have decision making responsibility. The meeting will be held at the above noted date, time and location. (If a Quorum is present the Chairperson shall announce, "Please let the minutes reflect that a quorum of the Village Board is present and that the Village Board members may be making comments under the Public Comments section of the agenda, during any Public Hearing(s) or if the rules are suspended to allow them to do so.)

1. Roll call.
2. Consideration and possible action on the minutes of September 6, 2023.
3. Discussion and possible action on drive-through monitor signs for Landmark Credit Union located at N64W22694 Main Street.
4. Adjournment.

Anthony LeDonne
Chairperson

Jeremy Smith
Village Administrator

Please note that, upon reasonable notice, efforts will be made to accommodate the needs of disabled individuals through appropriate aids and services. For additional information or to request this service, contact Jeremy Smith at 246-5200.



N64W23760 Main Street
Sussex, Wisconsin 53089
Phone (262) 246-5200
FAX (262) 246-5222
Email: info@villagesussex.org
Website: www.villagesussex.org

MEMORANDUM

TO: Architectural Review Board
FROM: Gabriel Gilbertson, Community Development Director
RE: November 1, 2023 Architectural Review Board
DATE: October 26, 2023

The following is background information for the ARB agenda items (Design Standards 3-25-2014)

- I. **Roll call.**
- II. **Consideration and possible action on the ARB minutes of September 6, 2023.**
- III. **Discussion and possible action on a drive-through monitor sign for Landmark Credit Union located at N64W22694 Main Street.**

Landmark Credit Union is located on the far west end of the Sussex Plaza multi-tenant commercial building and is zoned B-3 Highway Business District. Landmark Credit Union is proposing to install an electronic message sign on the face of the building in the drive-through location.

Section 17.0807(C)(1)(a) allows electronic message signs only when they are part of a monument sign. However, many businesses within the Village use electronic message signs for their drive-through menu boards and have been approved through the Architectural Review Board as part of the development process for those businesses. Staff determined it would be appropriate to be consistent with the approval of these types of signs and directed the applicant apply for ARB review of the sign before issuing a Sign Permit.

Site

- The proposed sign will be located on the westernmost façade of the multi-tenant building approximately 350 feet from the public right-of-way line. The sign will not be visible from traffic on Main Street and there is a dense row of evergreen trees on the western property line blocking the view of the building from the industrial properties to the west.

Architecture

- The architecture of the building is not being modified in any way.

Lighting and Signage

- The proposed electronic message sign is 25.8 inches by 45.4 inches. It is effectively an outdoor TV that will be used for advertising for the bank.

Landscape

- There will be no changes to any existing landscaping.

Policy Question:

1. Are there any concerns with the proposed sign?

Action Items:

1. Approve the electronic message sign.

Staff Recommendation: Staff recommends the Architectural Review Board approve a drive-through monitor sign for Landmark Credit Union located at N64W22694 Main Street.

VILLAGE OF SUSSEX
SUSSEX, WISCONSIN

Minutes of the Architectural Review Board (ARB) meeting held on September 6, 2023.

President LeDonne called the meeting to order at 4:01 p.m.

Members present: Anthony LeDonne, Gary Foxe, Stacy Riedel, and Michael Smith

Members absent: Mike Knapp

Others present: Gabe Gilbertson, Community Development Director

Consideration and possible action on the minutes of June 7, 2023.

A motion Foxe, seconded by Riedel to approve the minutes of the meeting held on June 7, 2023.

All ayes, motion carried.

Discussion and possible action on building and site plans in association with a Conditional Use Permit amendment for Beer Capitol for a warehouse and distribution expansion at their facility located at W222N5700 Miller Way.

A motion by Foxe, seconded by Smith to approve the site and building plans and recommend the Plan Commission approve the Conditional Use Permit amendment for Beer Capitol for a warehouse and distribution expansion at their facility located at W222N5700 Miller Way.

All ayes, motion carried.

Discussion and possible action on an exception from the Sussex Design Standards in association with a Conditional Use Permit amendment for Beer Capitol for a warehouse and distribution expansion at their facility located at W222N5700 Miller Way.

A motion by Smith, seconded by Riedel to approve an exception from the Sussex Design Standards for the reduced window and door opening requirements and loading dock location in association with the Conditional Use Permit amendment for Beer Capitol for a warehouse and distribution expansion at their facility located at W222N5700 Miller Way.

All ayes, motion carried.

A motion by LeDonne, seconded by Foxe to adjourn the meeting at 4:20 pm.

All ayes, motion carried.

Respectfully submitted,
Jeremy Smith, Village Administrator



N64W23760 Main Street
Sussex, Wisconsin 53089
Phone (262) 246-5200
FAX (262) 246-5222
Email: info@villagesussex.org
Website: www.villagesussex.org

REQUEST FOR ARCHITECTURAL REVIEW BOARD

The ARB reviews projects after conceptual review has been made by staff and the Plan Commission. The ARB determines if the project meets the Village of Sussex Design Standards established to ensure high quality buildings. A copy of the Design Standards can be found on our Village website www.villagesussex.org. The ARB makes a recommendation to the Plan Commission of its findings.

The fee for the project review is \$125.00 check made payable to the Village of Sussex. (All fees are non-refundable).

ARB meetings are held on the first Wednesday of the month at 10:00 a.m. at the 2nd floor Committee Room at the Sussex Civic Center.

SUBMITTAL REQUIREMENTS:

The following must be submitted 10 business days prior to the meeting date:

For new construction

1 full set of plans with Plan Commission requested revisions*. (Refer to the Site Plan Review Checklist) 6 reduced copies.

Miscellaneous projects:

6 copies of project to be reviewed preferred size 11x17 in color. (Building elevations, site plan, lighting plan, landscape plan and sign plan).

Project Name **Land Mark Credit Union - Drive Thru Monitor**

Location **N64 W22694 Main Street**

Contact person for meeting and minutes: **Eric Rohs - Sign Effectz, Inc.**

E-mail address: **ericr@signeffectz.com** Phone #: **262-220-9220**

Please bring to the meeting building material samples and display boards.

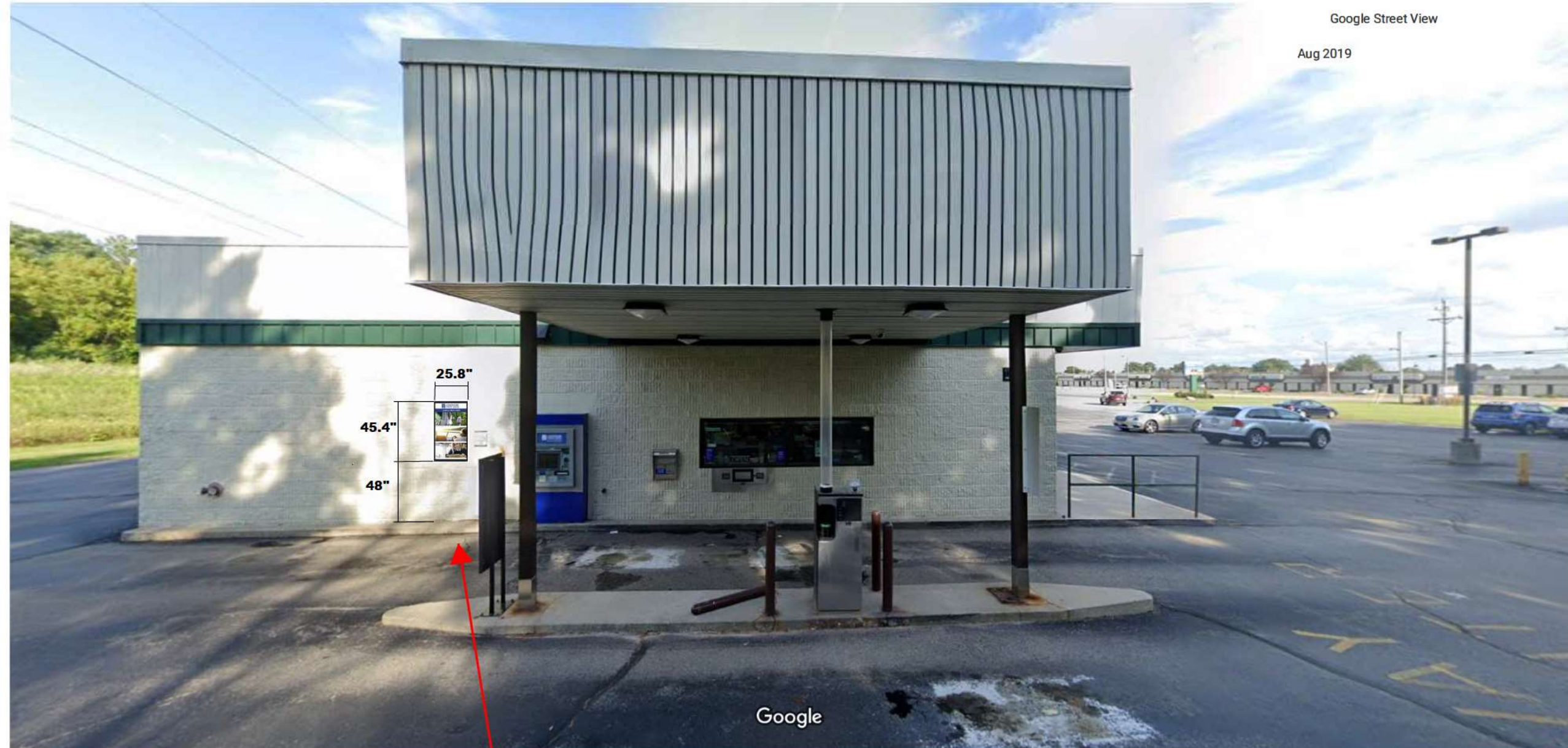
Village contact:

Gabe Gilbertson
Community Development Director
(262)246-5215 ggilbertson@villagesussex.org

*Staff will review and may make additional requests for changes and require new plans submitted prior to deadline date.

Landmark Credit Union, N64 W22694 Main Street





Drive Thru Moniotr Location

Slim & Robust Design with Outstanding Visibility

Ultra High Brightness Outdoor Display
XE4F Series

49

With a tough design that is also remarkably slim and lightweight, the XE4F Series can be easily installed to meet needs in a variety of custom outdoor environments. With upgraded brightness, the XE4F displays can capture customers' attention even under direct sunlight.



Slim & Light
Design



Outstanding
Visibility



IP56 Rated
Dust/Water Proof



Easy Data Control
& Maintenance

Train number	Class	Destination	Arrivals	Track	Numbering of wagons
709	High-speed	N.Novgorod-Moscow	14:58	1	rear
717	High-speed	Ivanovo-Moscow	10:50		rear
084	Express	Adler-Moscow	11:25		rear
835	High-speed	Kovrov-Moscow	12:20		rear
142	Express	Lgov-Moscow	12:31		rear
072	Express	Belgorod-Moscow	12:56		rear
058	High-speed	Stary Oskol-Moscow	13:10		rear
020	Express	Kharkiv-Moscow	15:52		rear
7050	sub	Tula-Moscow	15:57		
737	High-speed	Ivanovo-Moscow	16:05		rear
7081	sub	Vladimir-Moscow	16:09	8T	
701	High-speed	N.Novgorod-Moscow	16:20	1	rear



Slim & Light Design

XE4F series composed of single display with a light and slim design and it can be easily customized to suit various external environments with no need for separate casing.



Easy integration for partner's customized design

Because the XE4F Series is significantly thinner and lighter than previous designs, it is mount-ready and can be more easily customized for a variety of applications.



Bright & Brilliant

The XE4F series possess powerful brightness of 4,000nits, providing clear and vivid picture quality even under direct sunlight.



Wide Viewing Angle

IPS technology provides better control of the liquid crystals, which in turn allows the screen to be viewed at virtually any angle.



Long Lasting Brightness

With a powerful brightness of 4,000 nits and wide viewing angles, the XE4F Series delivers content clearly and catches the attention of viewers no matter where they are, making it the ultimate display for outdoor visibility.



Visible with Polarized Sunglasses

Quarter Wave Plate technology in this display enables clear visibility even when the viewer is wearing polarized sunglasses.



Secured Protection with IP56 Design

The XE4F Series is rated IP56 for protection against dust and liquids so that it can serve reliably outdoors in almost all kinds of weather.



Protective Glass (IK10 Certified)

The tempered and laminated front glass ensures optimum protection from outdoor extremities, reducing / minimizing damage from external impacts.

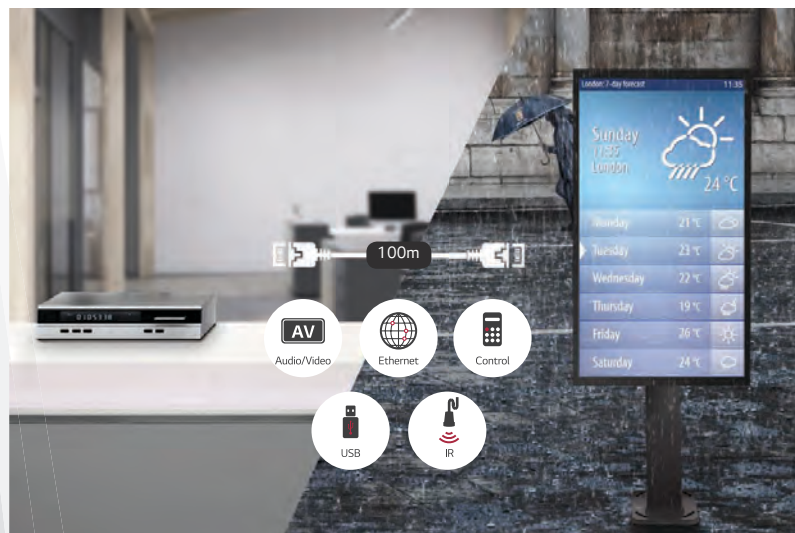


* The image is for illustrative purposes only

**IK rating refers to the degree of resistance against external impacts on a scale of 0 to 10. (10 indicates the highest level of protection.)

Support for HDBaseT™

The XE4F Series supports the HDBaseT global standard for the transmission of ultra-high definition video and audio, Ethernet, controls, USB and IR over a single, long-distance cable for easier control of the display.

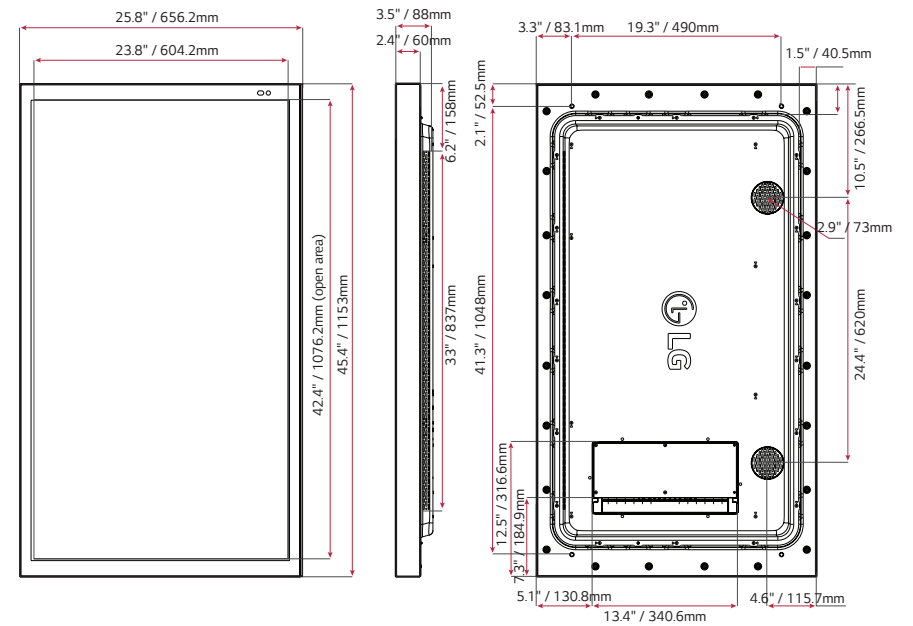


Web Monitoring

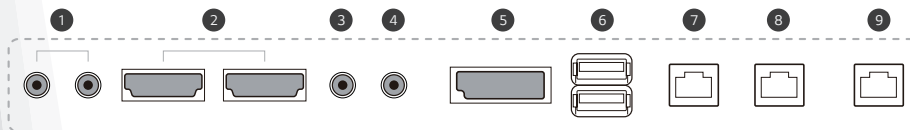
The embedded web monitoring allows a variety of parameters to be diagnosed in real time using temperature, pixel, door, ambient light and gyro sensors. It can be easily controlled at all times.



49XE4F



CONNECTIVITY



- 1 SPEAKER OUT
- 2 HDMI IN
- 3 RS232C IN
- 4 RS232C OUT
- 5 DP IN
- 6 USB IN
- 7 LAN IN
- 8 LAN OUT
- 9 HDBaseT IN



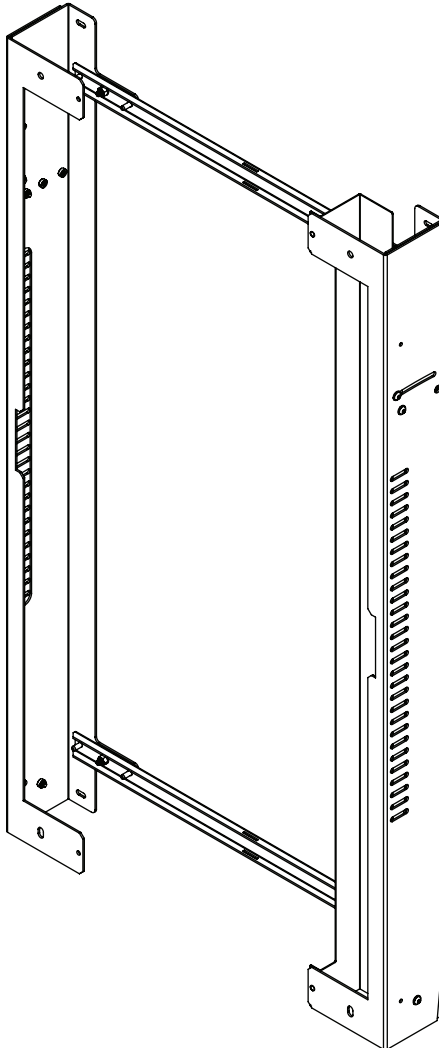
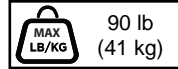
SPECIFICATIONS

	Model	55XE4F	49XE4F	
PANEL	Screen Size	55"	49"	
	Panel Technology	IPS	IPS	
	Back Light Type	Direct	Direct	
	Aspect Ratio	16 : 9	16 : 9	
	Native Resolution	1,920 x 1,080 (FHD, WRGB)	1,920 x 1,080 (FHD, WRGB)	
	Refresh Rate	60Hz	60Hz	
	Brightness	Typ. 4,000nit, Min. 3,200nit	Typ. 4,000nit, Min. 3,200nit	
	Contrast Ratio	1,300:1	1,300:1	
	Dynamic CR	500,000:1	500,000:1	
	Color gamut	72%	72%	
	Viewing Angle(H x V)	178 x 178	178 x 178	
	Color Depth	1.07 Billion (10bit)	1.07 Billion (10bit)	
	Response Time (G to G)	8 ms	8 ms	
	Surface Treatment(Haze)	Haze 3%	Haze 3%	
	QWP(Quarter Wave Plate)	Yes	Yes	
	Life time(Typ.)	50,000 Hrs	50,000 Hrs	
	Operation Hours	24 Hrs	24 Hrs	
Orientation	Portrait & Landscape	Portrait & Landscape		
INPUT	Digital	HDMI Yes (2), HDCP2.2 DP Yes (1), HDCP1.3	HDMI Yes (2), HDCP2.2 DP Yes (1), HDCP1.3	
	DVI-D	No	No	
	HDBaseT	Yes	Yes	
	Analog	RGB	No	
	Audio In	No	No	
	External Control	RS232C IN RJ45(LAN)	Yes Yes	
	USB	Yes (2), USB2.0	Yes (2), USB2.0	
	External Speaker Out	Yes (1, L/R)	Yes (1, L/R)	
	External Control	RS232C OUT RJ45(LAN)	Yes (1) Yes (1), HDBaseT	
	Depth	5 mm	5 mm	
MECHANICAL SPECIFICATION	Protection Glass	Degree of Protection IK10 Tempered Yes Anti-Reflective Yes Infrared - Resistance (IR) Yes Shatter-Proof Yes	Degree of Protection IK10 Tempered Yes Anti-Reflective Yes Infrared - Resistance (IR) Yes Shatter-Proof Yes	
	Bezel Color	Black	Black	
	Bezel Width	38.4mm(T/B), 26.0mm(L/R)	38.4mm(T/B), 26.0mm(L/R)	
	Monitor Dimension (W x H x D)	29" x 50.9" x 3.1" / 737.4 x 1,292.5 x 88.0mm	25.8" x 45.4" x 3.5" / 656.2 x 1,153x 88.0mm	
	Handle	No	No	
	VESA™ Standard Mount Interface	No (non-standard)	No (non-standard)	
	Internal Memory	16GB (System 4GB + Available 12GB)	16GB (System 4GB + Available 12GB)	
	Wi-Fi	Built-in No Dongle ready No	No No	
	HARDWARE	Sensors	Temperature Sensor Yes (Panel Front, M/Board, LCM , Inside) Auto Brightness sensor Yes BLU Sensor Yes Pixel sensor Yes Proximity Sensor No Gyro Sensor Yes Humidity Sensor Yes Current Sensor Yes	Temperature Sensor Yes (Panel Front, M/Board, LCM , Inside) Auto Brightness sensor Yes BLU Sensor Yes Pixel sensor Yes Proximity Sensor No Gyro Sensor Yes Humidity Sensor Yes Current Sensor Yes
		Power Indicator	No	No
Local Key Operation		No	No	
FAN		Yes (Open Loop , Closed Loop)	Yes (Open Loop , Closed Loop)	
Dust / Water Proof		IP56	IP56	
Direct Sunlight		Yes	Yes	
Power Supply		100-240V~, 50/60Hz	100-240V~, 50/60Hz	
Power Type		Built-In Power	Built-In Power	
DPM		1W	1W	
Power off		0.5W	0.5W	

	Model	55XE4F	49XE4F
SOFTWARE	webOS ver.	webOS 4.0	webOS 4.0
	Embedded CMS	USB Auto Playback Yes Local Contents Scheduling Yes Group Manager Yes	Yes Yes Yes
	Fail over	Yes	Yes
	Image	Booting Logo Yes No Signal Yes RS-232C Yes	Yes Yes Yes
	Content Sync.	Backlight sync Yes Local Network Yes PIP Yes PBP Yes	Yes Yes Yes Yes
	Multi-screen	Yes (2)	Yes (2)
	Screen Share	No	No
	Video Tag	Yes (4)	Yes (4)
	Play via URL	Yes	Yes
	OSD Rotation	Yes	Yes
	Lock mode	Yes	Yes
	Content Rotation	Yes	Yes
	Gapless Playback	Yes	Yes
	Tile Mode Setting	Yes (Max. 15x15)	Yes (Max. 15x15)
	Setting Data Cloning	Yes	Yes
	Firmware Update by Network	Yes	Yes
	SNMP	Yes	Yes
ISM Mode (Image Sticking Minimization)	Yes	Yes	
Auto Set ID	Yes	Yes	
Status Mailing	Yes	Yes	
"Outdoor API control (Backlight, Fan, Illuminance, Humidity, Door, check screen, rotation)"	Yes	Yes	
Control Manager	Yes	Yes	
3rd Party Control Compatibility	Crestron Connected No DPM Yes On/Off Schedule Yes Holiday Schedule Yes	No Yes Yes Yes	
Power Mgmt.	Power on Status Yes (Standby, Power On, Last Status) Energy Saving Yes Smart Energy Saving Yes PM mode Yes Wake on LAN Yes Power on Delay Yes	Yes (Standby, Power On, Last Status) Yes Yes Yes Yes Yes	
Daylight Saving Time	Yes	Yes	
Beacon	Yes	Yes	
HDMI-CEC	Yes	Yes	
SI Server Setting	Yes	Yes	
HDBaseT	Yes	Yes	
WOL	Yes	Yes	
webRTC	Yes	Yes	
ENVIRONMENT CONDITIONS	Operation Temperature	-22°F to 122°F / -30°C to 50 °C	-22°F to 122°F / -30°C to 50 °C
SOUND	Operation Humidity	5 % to 100 %	5 % to 100 %
CERTIFICATIONS	Speaker	No	No
	Safety	UL / cUL / CB	UL / cUL / CB
	EMC	FCC Class "A" / CE / KCC	FCC Class "A" / CE / KCC
SOFTWARE COMPATIBILITY	ErP / Energy Star	Yes / No	Yes / No
	SuperSign CMS	Yes	Yes
	SuperSign Control/Control+	Yes/Yes	Yes/Yes
LANGUAGE	Signage 365 Care	No	No
	Languages	Yes	Yes
ACCESSORIES & OTHER	Basic	English, French, German, Spanish, Italian, Korean , Chinese(Simplified), Chinese(Original), Portugues(Brazil), Swedish, Finnish, Norwegian, Danish, Russian, Japanese, Portugues(Europe), Dutch, Czech, Greek, Persian	Remote Controller, Manual(EIG, ESG), Regulation Book, Phone to RS232C Gender, HDMI Cable
	Warranty	3 Year Limited	3 Year Limited

peerless-AV[®]

EWP-49XE4F, EWP-55XE4F



ENG
ESP
FRN
DEU
NEL
ITL
ČES
SLK
POR
TUR

