

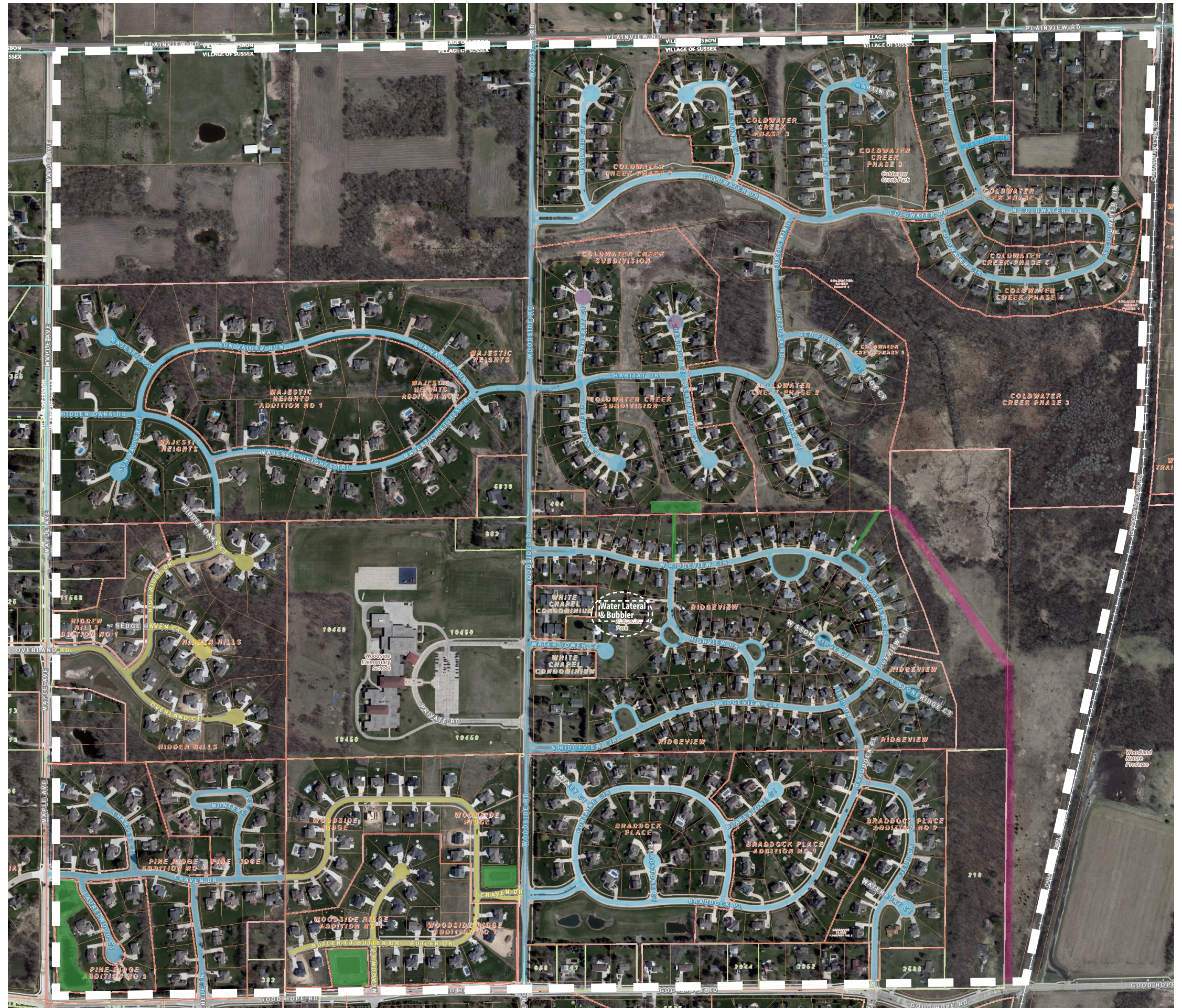


**2025 Road Program Project
December 2023**

LEGEND

- Resurfacing Areas: Mill & Overlay with Patching
- Possible Repaving Areas: Pavement Replacements & Slope Adjustments
- Pavement Recently Placed: Pavement Patching
- Storm Outfall Repairs and/or Stormwater Ponds Maintenance
- Access to Ridgeview Storm Outfall Repair
- Project Area

NOTE: Water lateral and bubbler at Ridgeview Park. (East of Watertower Court.)





**2025 Road Program Project
December 2023**

