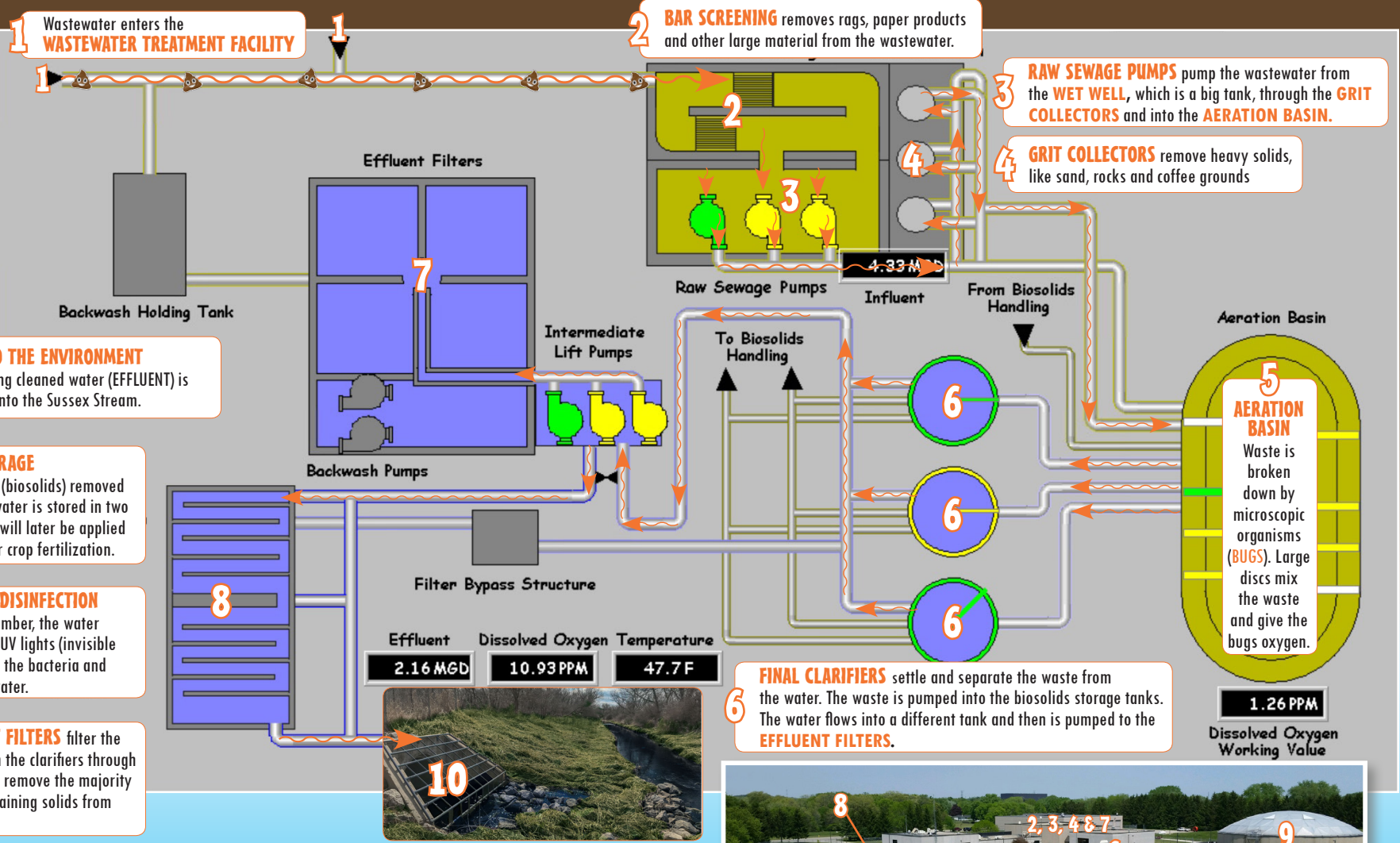


Where Does All the DIRTY Water Go?

The water we use in our homes gets DIRTY, and when water gets dirty, we have to clean it.



When you flush a toilet, or water drains from sinks, washing machines, or dishwashers, the **WASTEWATER** flows out of your home through a pipe called a **LATERAL**.

The lateral carries waste to a larger pipe in the street called a **MAIN**.

The mains carry the wastewater to one large pipe that enters the **WASTEWATER TREATMENT FACILITY** and starts the process of treating, or cleaning, the water.

